

Price List

INDEX

From Viefe around de world	4
Our products	6

HANDLES & KNOBS

0035	ACER	9	0375	VANN	25-26
0053	DINO	9	0376	BOXX	26
0056	U	9-10	0380	STEEP	26
0064	KOMBI	10	0390	PETRA	26
0073	TAP	10	0391	AURA	26
0077	ANGLE	11	0392	ORION	27
0091	RASO	12	0393	DUKE	27
0094	HIDE	12	0394	AVA	27
0105	NEST	12	0404	FLEXA	27-28
0109	GRAF	13	0405	RAVILOLO	28
0117	CURVE	13	0410	BUTTON	28
0119	WAVE	13	0430	GRAF MINI	29
0127	JEY	14	0434	VECTOR	29-30
0139	LINEAR	15	0444	PEAK	30
0140	LINEAR	15	0446	ESTE	30
0162	KADO	16	0447	BELLA	31
0163	JEY2	16-17	0449	HEXA	31
0165	CALIN	17	0451	FELTRE	31
0166	ECHO	17	0452	BRAVE	32
0168	COMO	18	0459	LINES	32
0195	SENSE	18	0486	GRAF BIG	32
0206	ARCH	18	0487	PURA	33
0219	ARROW	19	0489	BOL	33
0226	REDO	19	0494	LAND	33
0235	CLOS	19	0495	FLOID	34
0239	ARA W	19	0496	BAU	34
0241	ROMA	20	0497	DIABOLO	34
0243	LOW ST	20	0499	ROUND	34
0250	FORMA	20	0506	FIRM	35
0254	NOMA	21	0507	OBLONG	35
0255	NOMA	21	0511	RAIL	35
0281	FLAT	21	0516	PENDANT	36
0301	SENSE MINI	21	0518	WAY	36
0312	ARKO	21	0528	RILLE	36
0322	CUTT	22	0530	DISC	37
0334	BRIK	22	0536	LUV	37
0340	BARCCO	22	0538	CONIC	37
0343	GRADA	23	0542	FOLD	38
0366	CUBIC	24	0543	SOFT	38
0369	RITA	24	0552	RIM	38
0372	ONA	24-25	0553	OTO	38
0373	NICK	25	0556	DIPO	39
0374	BALL	25	0583	ARPA	39

HANDLES & KNOBS

0584	MIGG	39
0588	ARPA PLATE	40
0590	BELT	40
0591	ETO	40
0597	PLIÉ	40
0600	WING	41
0601	OH	41
0602	VALLEY	41
0603	LIPP	42
0604	PRISMA	42
0608	QUART MINI	42
0610	FLAPP	42
0613	FLAPP WOOD	43
0614	EQUIS	43
0616	QUART BIG	43
0621	RILLE MINI	44
0627	FUSION	44
0629	MOON	44
0635	LIDD	45
0636	POINT	45
0638	PRISM	45
0643	LINKK	46
0645	RISS MINI	46
0648	OMEGA	46
0650	MOULE	47
0655	RISS BIG	47
0657	NOBB	47
0658	DUO MINI	48
0659	DUO BIG	48
0662	MOON Sistema de una cara	44
0663	MOON Sistema de doble cara	44
0664	LUV WOOD	48
0665	LUV WOOD Sistema de una cara	48
0668	DUO BIG Sistema de una cara	48
0670	DUO BIG Sistema de doble cara	48
0671	LUV WOOD Sistema de doble cara	48

WALL HOOKS

7001	ZOOT	50
7002	TAKK	50
7003	FLOID	50
7004	CRESTT	51
7005	CORNER	51
7007	ORBIT	51
7008	SWITCH	51
7009	GRAF	52
7010	FIN	52
7011	TOK	52
7012	TIK	52
7014	DIABOLO	53
7015	BOL	53
7016	ROUND	53
7017	COMO	53
7018	LUV WOOD	54
7022	ZETT	54
7024	BIRDD	54
7025	MEGG	54
7027	EQUIS	55
7035	ARPA	55
7036	ARPA PLATE	55
7037	LUV	55
7039	BELT	56

DOOR STOPPERS

8002	PUK	58
8003	BUGGY	58
8007	LOW	58
8009	GRAF	58
8011	ARPA	59
8013	ARPA WALL	59

FEET

6005	FONDA	61
------	--------------	----

Finishes

62-63



**FROM
VIEFE
*around
the world***



Singular products for plural tastes

Interior design professionals and architects from all around the world trust in our products for their projects, and of course individual customers. At Viefe they can find a wide variety of eclectic, decorative accessories which adapt to different tastes and lifestyles. Our designs transform all types of spaces and transmit the personality of whoever lives in that space.

OUR PRODUCTS

Handles and Knobs

Our collections of knobs, handles, and long handles for cabinets integrate into furniture with the utmost precision. They completely transform them. Elevate their aesthetic. They complete the environments where they are found and connect them with the latest trends. Totally ergonomic, with an incredible touch and tangible quality.

Wall hooks

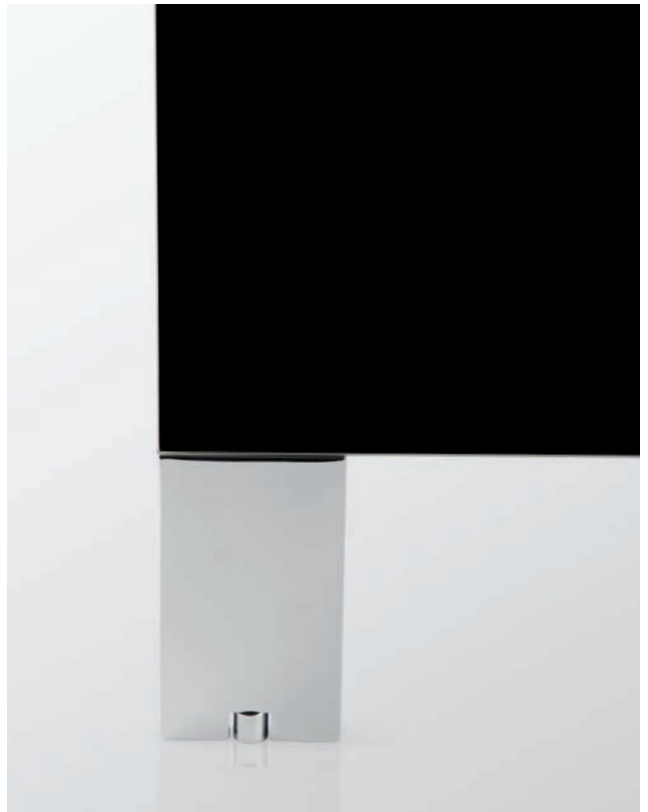
Their design follows the same line as our handles in many cases and combine with them to generate harmonious environments. They can be fitted easily and allow you to hang up all types of garments and accessories. They are practical and aesthetic, extremely original with optimal dimensions and innovative shapes. They have the mark of designers from all over the world who, just like us, dream without limits.

Door Stoppers

Our door stoppers set physical limits, but not creative limits. They protect and surprise. They add style whilst helping to avoid banging doors. Created to be seen, they make floors become part of the design in tune with the rest of the space. They are characterized by their resilience. They can be differentiated by their shapes. And they can be defined by their creativity.

Feet

Furniture feet manufactured in aluminum. Especially suitable for furniture models that require adjustable legs to position itself correctly on the floor. It has a U-shaped groove incorporating an adjuster which can be manoeuvred so fixing the setting of the foot. Available in three sizes, Fonda includes four different finishes: a shiny finish, stainless steel look, brushed black and the new brushed dark brass.



Handles & Knobs



0035 ACER

Article	Description	Price EUR	Units/Box
0035018S25	ACER - D18mm knob brushed stainless steel	6,713	25
0035023S25	ACER - D23mm knob brushed stainless steel	8,334	25
0035028S25	ACER - D28mm knob brushed stainless steel	9,517	25

0053 DINO

Article	Description	Price EUR	Units/Box
0053096Z01	DINO - CC96-128L156mm hdle polished chrome	7,665	25
0053096Z23	DINO - CC96-128L156mm handle brushed nickel	9,234	25
0053096ZM1	DINO - CC96-128L156mm handle matt white	7,408	25
0053096ZM2	DINO - CC96-128L156mm handle matt black	7,408	25
0053096ZP4	DINO - CC96-128L156mm hdle aluminum look	6,97	25
0053192Z01	DINO - CC160-192L221mm hdle pol chrome	10,751	25
0053192Z23	DINO - CC160-192L221mm hdle brushed nickel	11,909	25
0053192ZM1	DINO - CC160-192L221mm handle matt white	9,671	25
0053192ZM2	DINO - CC160-192L221mm handle matt black	9,671	25
0053192ZP4	DINO - CC160-192L221mm handle alu look	9,671	25
0053320Z01	DINO - CC288-320L349mm hdle polished chrome	19,188	25
0053320Z23	DINO - CC288-320L349mm hdle brushed nickel	19,599	25
0053320ZM1	DINO - CC288-320L349mm handle matt white	15,87	25
0053320ZM2	DINO - CC288-320L349mm handle matt black	15,87	25
0053320ZP4	DINO - CC288-320L349mm handle aluminum look	16,461	25

0056 U

Article	Description	Price EUR	Units/Box
0056128Z01	U - CC128L136mm handle polished chrome	7,408	25
0056128Z11	U - CC128L136mm handle matt chrome	7,999	25
0056128Z23	U - CC128L136mm handle brushed nickel	9,054	25
0056128Z26	U - CC128L136mm handle brushed copper	10,983	25
0056128Z27	U - CC128L136mm handle brushed brass	10,983	25
0056128Z31	U - CC128L136mm handle brushed grey	11,549	25
0056128ZM1	U - CC128L136mm matt white handle	7,382	25
0056128ZM2	U - CC128L136mm handle matt black	7,382	25
0056160Z01	U - CC160L168mm handle polished chrome	9,697	25
0056160Z11	U - CC160L168mm handle matt chrome	9,774	25
0056160Z23	U - CC160L168mm handle brushed nickel	10,751	25
0056160Z26	U - CC160L168mm handle brushed copper	12,732	25
0056160Z27	U - CC160L168mm handle brushed brass	12,732	25
0056160Z31	U - CC160L168mm handle brushed grey	13,529	25
0056160ZM1	U - CC160L168mm matt white handle	9,131	25
0056160ZM2	U - CC160L168mm handle matt black	9,131	25
0056192Z01	U - CC192L200mm handle polished chrome	10,031	25
0056192Z11	U - CC192L200mm handle matt chrome	10,031	25
0056192Z23	U - CC192L200mm handle brushed nickel	11,317	25
0056192Z26	U - CC192L200mm handle brushed copper	14,198	25
0056192Z27	U - CC192L200mm handle brushed brass	14,198	25
0056192Z31	U - CC192L200mm handle brushed grey	15,15	25
0056192ZM1	U - CC192L200mm matt white handle	9,851	25
0056192ZM2	U - CC192L200mm handle black matt	9,851	25
0056320Z01	U - CC320L328mm handle polished chrome	15,973	25
0056320Z11	U - CC320L328mm handle matt chrome	16,976	25

0056 U

Article	Description	Price EUR	Units/Box
0056320Z23	U - CC320L328mm handle brushed nickel	18,416	25
0056320Z26	U - CC320L328mm handle brushed copper	20,525	25
0056320Z27	U - CC320L328mm handle brushed brass	20,525	25
0056320Z31	U - CC320L328mm handle brushed grey	22,069	25
0056320ZM1	U - CC320L328mm matt white handle	15,098	25
0056320ZM2	U - CC320L328mm handle matt black	15,098	25
0056492Z01	U - CC492L500mm handle polished chrome	28,139	25
0056492Z11	U - CC492L500mm handle matt chrome	32,46	25
0056492Z23	U - CC492L500mm handle brushed nickel	31,045	25
0056492Z26	U - CC492L500mm handle brushed copper	31,045	25
0056492Z27	U - CC492L500mm handle brushed brass	31,045	25
0056492Z31	U - CC492L500mm handle brushed grey	32,254	25
0056492ZM1	U - CC492L500mm matt white handle	27,084	25
0056492ZM2	U - CC492L500mm handle matt black	27,084	25

0064 KOMBI

Article	Description	Price EUR	Units/Box
00641092S25	KOMBI - CC1092L1114mm brushed SST handle	37,733	10
0064160S25	KOMBI - CC160L182mm brushed SST handle	11,883	25
0064192S25	KOMBI - CC192L214mm brushed SST handle	13,169	25
0064292S25	KOMBI - CC292L314mm brushed SST handle	15,844	25
0064342S25	KOMBI - CC342L364mm brushed SST handle	17,464	25
0064392S25	KOMBI - CC392L414mm brushed SST handle	18,956	25
0064492S25	KOMBI - CC492L514mm brushed SST handle	23,457	25
0064792S25	KOMBI - CC792L814mm brushed SST handle	30,196	25

0073 TAP

Article	Description	Price EUR	Units/Box
0073040ZM2	TAP - D40mm recessed pull matt black	6,217	25
0073040ZP1	TAP - D40mm recessed pull chrome look	6,224	25
0073060ZM2	TAP - D60mm recessed pull matt black	8,668	25
0073060ZP1	TAP - D60mm recessed pull chrome look	7,793	25

0077 ANGLE



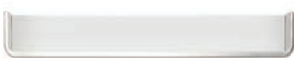
Article	Description	Price EUR	Units/Box
0077032L04	ANGLE - CC32L45mm anodized alu handle matt	3,292	25
0077064L01	ANGLE - CC64L100mm pol chrome alu handle	5,787	25
0077064L04	ANGLE - CC64L90mm anodized alu handle matt	4,064	25
0077064L24	ANGLE - CC64L100mm hdle SST look	5,89	25
0077064L29	ANGLE - CC64L100mm brush dark brass hdle	6,763	25
0077064LM1	ANGLE - CC64L100mm matt white handle	6,97	25
0077064LM2	ANGLE - CC64L100mm matt black handle	6,97	25
0077064LM23	ANGLE - CC64L100mm metal grey handle	8,025	25
0077064LM41	ANGLE - CC64L100mm metal brown handle	8,025	25
0077096L04	ANGLE - CC96L120mm anodized alu handle matt	4,887	25
0077128L01	ANGLE - CC96-128-160L200mm chrome hdle	10,16	25
0077128L04	ANGLE - CC128L150mm anodized matt alu handle	6,224	25
0077128L24	ANGLE - CC96-128-160L200mm hdle SST look	10,34	25
0077128L29	ANGLE-CC96-128-160L200mm brush dark brass hdle	11,203	25
0077128LM1	ANGLE - CC128-160L200mm matt white handle	8,822	25
0077128LM2	ANGLE - CC128-160L200mm matt black handle	8,822	25
0077128LM23	ANGLE - CC128-160L200mm metal grey handle	9,877	25
0077128LM41	ANGLE - CC128-160L200mm metal brown handle	9,877	25
00771440LM1	ANGLE - cc480-1440L1480mm matt white handle	75,208	10
00771440LM2	ANGLE - cc480-1440L1480mm matt black handle	75,208	10
00771440LM23	ANGLE - cc480-1440L1480mm metal grey handle	77,24	10
00771440LM41	ANGLE - cc480-1440L1480mm metal brown handle	77,24	10
0077160L04	ANGLE - CC160L190mm anodized matt alu handle	7,073	25
0077192L01	ANGLE - CC192L300mm pol chrome alu handle	14,918	25
0077192L04	ANGLE - CC192L250mm anodized matt alu handle	8,951	25
0077192L24	ANGLE - CC192L300mm hdle SST look	13,966	25
0077192L29	ANGLE - CC192L300mm brushed dark brass hdle	14,806	25
0077192LM1	ANGLE - CC192L300mm matt white handle	12,346	25
0077192LM2	ANGLE - CC192L300mm matt black handle	12,346	25
0077192LM23	ANGLE - CC192L300mm metal grey handle	12,886	25
0077192LM41	ANGLE - CC192L300mm metal brown handle	12,886	25
0077256L01	ANGLE - CC256-320L400mm pol chrome alu hdle	19,265	25
0077256L04	ANGLE - CC256L300mm anodized matt alu handle	10,803	25
0077256L24	ANGLE - CC256-320L400mm SST look handle	17,387	25
0077256L29	ANGLE - CC256-320L400mm brush dark brass hdle	18,431	25
0077256LM1	ANGLE - CC256L400mm matt white handle	15,201	25
0077256LM2	ANGLE - CC256L400mm matt black handle	15,201	25
0077256LM23	ANGLE - CC256L400mm metal grey handle	15,767	25
0077256LM41	ANGLE - CC256L400mm metal brown handle	15,767	25
0077416L01	ANGLE - CC416L500mm chrome alu hdle	23,766	25
0077416L24	ANGLE -CC416L500mm hdle SST look	21,168	25
0077416L29	ANGLE -CC416L500mm brush dark brass hdle	22,807	25
0077416LM1	ANGLE - CC416L500mm matt white handle	19,857	25
0077416LM2	ANGLE - CC416L500mm matt black handle	19,857	25
0077416LM23	ANGLE - CC416L500mm metal grey handle	21,245	25
0077416LM41	ANGLE - CC416L500mm metal brown handle	21,245	25
0077480LM1	ANGLE - CC480L600mm matt white handle	21,4	25
0077480LM2	ANGLE - CC480L600mm matt black handle	21,4	25
0077480LM23	ANGLE - CC480L600mm metal grey handle	22,892	25
0077480LM41	ANGLE - CC480L600mm metal brown handle	22,892	25
0077512L01	ANGLE - CC480-512L600mm pol chrome alu hdle	28,242	25
0077512L24	ANGLE - CC480-512L600mm hdle SST look	25,464	25
0077512L29	ANGLE - CC480-512L600mm brush dark brass hdle	27,579	25
0077640L01	ANGLE - CC640L900mm pol chrome alu hdle	45,217	25
0077640L24	ANGLE - CC640L900mm hdle SST look	39,173	25
0077640L29	ANGLE - CC640L900mm brush dark brass hdle	41,524	25
0077640LM1	ANGLE - CC640L900mm matt white handle	30,351	25
0077640LM2	ANGLE - CC640L900mm matt black handle	30,351	25
0077640LM23	ANGLE - CC640L900mm metal grey handle	32,897	25
0077640LM41	ANGLE - CC640L900mm metal brown handle	32,897	25

0091 RASO

Article	Description	Price EUR	Units/Box
009103Z23	RASO - CC32L70mm recess hdle brushed nickel	13,169	25
0091108Z23	RASO - CC108L152mm recess hdle brush nickel	20,474	25

0094 HIDE

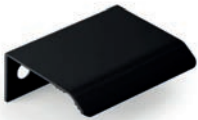
Article	Description	Price EUR	Units/Box
0094090Z01	HIDE - L90mm polished chrome recessed hdle	8,154	25
0094090Z23	HIDE - L90mm brushed nickel recessed hdle	8,745	25
0094090Z28	HIDE - L90mm brushed gold recessed hdle	8,951	25
0094090ZM1	HIDE - L90mm matt white recessed hdle	9,517	25
0094090ZM2	HIDE - L90mm matt black recessed hdle	9,517	25
0094180Z01	HIDE - L180mm polished chrome recessed hdle	9,234	25
0094180Z23	HIDE - L180mm brushed nickel recessed handle	9,542	25
0094180Z28	HIDE - L180mm brushed gold recessed handle	11,574	25
0094180ZM1	HIDE - L180mm matt white recessed handle	11,703	25
0094180ZM2	HIDE - L180mm matt black recessed handle	11,703	25
0094200ZP1	HIDE - L200mm chrome look recessed handle	9,517	25

0105 NEST

Article	Description	Price EUR	Units/Box
0105186Z01M1	NEST - L212mm hdle pol chrom+white d/19	27,933	25
0105186Z01ST	NEST - L212mm hdle pol chrome d/19	27,933	25
0105186Z23M1	NEST - L212mm hdle brush nickel+white d/19	28,576	25
0105186Z23ST	NEST - L212mm hdle brushed nickel d/19	28,576	25
0105186ZM2ST	NEST - L212mm hdle matt black d/19	27,367	25
0105206Z23ST	NEST - L212mm hdle brushed nickel d/ 20.5	28,576	25

0109 GRAF

Article	Description	Price EUR	Units/Box
0109017L01	GRAF - D17mm knob polished chrome	3,421	25
0109017L04	GRAF - D17mm knob anodized matt aluminum	3,292	25
0109017L24	GRAF - D17mm knob stainless steel look	3,395	25
0109017L27	GRAF - D17mm knob brushed brass	5,633	25
0109017L291	GRAF - D17mm knob brushed brass	4,655	25
0109017LM2	GRAF - D17mm knob matt black	3,369	25

0117 CURVE

Article	Description	Price EUR	Units/Box
0117032L04	CURVE- CC32L45mm anod matt alu profile hdle	3,781	25
0117032L24	CURVE - CC32L45mm SST look profile handle	4,167	25
0117032L31	CURVE - CC32L45mm brushed grey handle	4,167	25
0117032LM1	CURVE - CC32L45mm white alu profile handle	4,218	25
0117032LM2	CURVE - CC32L45mm black alu profile handle	3,987	25
0117064L24	CURVE - CC64L100mm SST look profile handle	5,221	25
0117128L04	CURVE - CC128L200mm anodized matt profile hdle	5,684	25
0117128L24	CURVE - CC128L200mm SST look profile hdle	7,253	25
0117128L31	CURVE - CC128L200mm brushed grey hdle	7,258	25
0117128LM1	CURVE - CC128L200mm white alu profile hdle	6,327	25
0117128LM2	CURVE - CC128L200mm black alu profile hdle	5,916	25
0117192L24	CURVE - CC192L300mm SST look profile hdle	10,417	25
0117320L24	CURVE - CC320L400mm SST look profile hdle	14,095	25
0117416L24	CURVE - CC416L500mm SST look profile hdle	15,947	25

0119 WAVE

Article	Description	Price EUR	Units/Box
0119032Z01	WAVE - CC32L45mm pol chrome recessed hdle	9,98	25
0119032Z23	WAVE - CC32L45mm brush nickel recessed hdle	11,574	25
0119032ZM2	WAVE - CC32L45mm matt black recessed hdle	8,977	25
0119160Z01	WAVE - CC160L173mm pol chrome recess hdle	17,619	25
0119160Z23	WAVE - CC160L173mm brush nickel recess hdle	21,528	25
0119160ZM2	WAVE - CC160L173mm matt black recess hdle	17,079	25

0127 JEY



Article	Description	Price EUR	Units/Box
01271197L24	JEY - L1197mm SST look profile handle	38,967	5
01271197L618	JEY - L1197mm brushed brass cava profile handle	45,037	5
01271197LM1	JEY - L1197mm white profile handle	32,074	5
01271197LM2	JEY - L1197mm black profile handle	32,074	5
0127147L24	JEY - L147mm SST look profile handle	7,793	15
0127147L618	JEY - L147mm brushed brass cava profile handle	9,028	15
0127147LM1	JEY - L147mm white profile handle	10,083	15
0127147LM2	JEY - L147mm black profile handle	10,083	15
0127197L24	JEY - L197mm SST look profile handle	8,359	15
0127197L618	JEY - L197mm brushed brass cava profile handle	9,671	15
0127197LM1	JEY - L197mm white profile handle	10,597	15
0127197LM2	JEY - L197mm black profile handle	10,597	15
0127247L24	JEY - L247mm SST look profile handle	9,002	15
0127247L618	JEY - L247mm brushed brass cava profile handle	10,417	15
0127247LM1	JEY - L247mm white profile handle	11,343	15
0127247LM2	JEY - L247mm black profile handle	11,343	15
0127297L24	JEY - L297mm SST look profile handle	10,623	15
0127297L618	JEY - L297mm brushed brass cava profile handle	12,295	15
0127297LM1	JEY - L297mm white profile handle	12,758	15
0127297LM2	JEY - L297mm black profile handle	12,758	15
01273000LM1	JEY - L3000mm matt white alu profile	71,485	15
01273000LM2	JEY - L3000mm matt black alu profile	71,485	15
0127347L24	JEY - L347mm SST look profile handle	12,192	15
0127347L618	JEY - L347mm brushed brass cava profile handle	14,095	15
0127347LM1	JEY - L347mm white profile handle	13,555	15
0127347LM2	JEY - L347mm black profile handle	13,555	15
0127397L24	JEY - L397mm SST look profile handle	13,401	15
0127397L618	JEY - L397mm brushed brass cava profile handle	15,484	15
0127397LM1	JEY - L397mm white profile handle	14,069	15
0127397LM2	JEY - L397mm black profile handle	14,069	15
0127447L24	JEY - L447mm SST look profile handle	14,970	10
0127447L618	JEY - L447mm brushed brass cava profile handle	17,310	10
0127447LM1	JEY - L447mm white profile handle	16,590	10
0127447LM2	JEY - L447mm black profile handle	16,590	10
0127497L24	JEY - L497mm SST look profile handle	16,358	10
0127497L618	JEY - L497mm brushed brass cava profile handle	18,905	10
0127497LM1	JEY - L497mm white profile handle	17,387	10
0127497LM2	JEY - L497mm black profile handle	17,387	10
0127597L24	JEY - L597mm SST look profile handle	19,316	10
0127597L618	JEY - L597mm brushed brass cava profile handle	22,326	10
0127597LM1	JEY - L597mm white profile handle	18,442	10
0127597LM2	JEY - L597mm black profile handle	18,442	10
0127697L24	JEY - L697mm SST look profile handle	22,094	10
0127697L618	JEY - L697mm brushed brass cava profile handle	25,541	10
0127697LM1	JEY - L697mm white profile handle	19,651	10
0127697LM2	JEY - L697mm black profile handle	19,651	10
0127797L24	JEY - L797mm SST look profile handle	24,744	10
0127797L618	JEY - L797mm brushed brass cava profile handle	28,602	10
0127797LM1	JEY - L797mm white profile handle	21,400	10
0127797LM2	JEY - L797mm black profile handle	21,400	10
0127897L24	JEY - L897mm SST look profile handle	28,705	5
0127897L618	JEY - L897mm brushed brass cava profile handle	33,180	5
0127897LM1	JEY - L897mm white profile handle	27,804	5
0127897LM2	JEY - L897mm black profile handle	27,804	5
0127997L24	JEY - L997mm SST look profile handle	32,125	5
0127997L618	JEY - L997mm brushed brass cava profile handle	37,141	5
0127997LM1	JEY - L997mm white profile handle	28,936	5
0127997LM2	JEY - L997mm black profile handle	28,936	5

0139 / 0140 LINEAR



Article	Description	Price EUR	Units/Box
01391197L24	LINEAR - L1197mm SST look profile hdle d/19	42,954	5
01391197L30	LINEAR - L1197mm brushed black profile hdle d/19	42,954	5
0139147L24	LINEAR - L147mm SST look profile hdle d/19	9,517	15
0139147L30	LINEAR - L147mm brushed black profile hdle d/19	9,517	15
0139197L24	LINEAR - L197mm SST look profile hdle d/19	12,449	15
0139197L30	LINEAR - L197mm brushed black profile hdle d/19	12,449	15
0139247L24	LINEAR - L247mm SST look profile hdle d/19	13,581	15
0139247L30	LINEAR - L247mm brushed black profile hdle d/19	13,581	15
0139297L24	LINEAR - L297mm SST look profile hdle d/19	15,484	15
0139297L30	LINEAR - L297mm brushed black profile hdle d/19	15,484	15
0139347L24	LINEAR - L347mm SST look profile hdle d/19	17,104	15
0139347L30	LINEAR - L347mm brushed black profile hdle d/19	17,104	15
0139397L24	LINEAR - L397mm SST look profile hdle d/19	18,879	15
0139397L30	LINEAR - L397mm brushed black profile hdle d/19	18,879	15
0139447L24	LINEAR - L447mm SST look profile hdle d/19	21,760	10
0139447L30	LINEAR - L447mm brushed black profile hdle d/19	21,760	10
0139497L24	LINEAR - L497mm SST look profile hdle d/19	23,457	10
0139497L30	LINEAR - L497mm brushed black profile hdle d/19	23,457	10
0139597L24	LINEAR - L597mm SST look profile hdle d/19	25,181	10
0139597L30	LINEAR - L597mm brushed black profile hdle d/19	25,181	10
0139697L24	LINEAR - L697mm SST look profile hdle d/19	27,136	10
0139697L30	LINEAR - L697mm brushed black profile hdle d/19	27,136	10
0139797L24	LINEAR - L797mm SST look profile hdle d/19	32,254	10
0139797L30	LINEAR - L797mm brushed black profile hdle d/19	32,254	10
0139897L24	LINEAR - L897mm SST look profile hdle d/19	36,344	5
0139897L30	LINEAR - L897mm brushed black profile hdle d/19	36,344	5
0139997L24	LINEAR - L997mm SST look profile hdle d/19	37,167	5
0139997L30	LINEAR - L997mm brushed black profile hdle d/19	37,167	5
01401197L24	LINEAR - L1197mm SST look profil hdle d/20.5	42,954	5
01401197L30	LINEAR-L1197mm brushed black profil hdle d/20.5	42,954	5
0140147L24	LINEAR - L147mm SST look profile hdle d/20.5	9,517	15
0140147L30	LINEAR - L147mm brushed black profile hdle d/20.5	9,517	15
0140197L24	LINEAR - L197mm SST look profile hdle d/20.5	12,449	15
0140197L30	LINEAR - L197mm brushed black profile hdle d/20.5	12,346	15
0140247L24	LINEAR - L247mm SST look profile hdle d/20.5	13,581	15
0140247L30	LINEAR - L247mm brushed black profile hdle d/20.5	13,581	15
0140297L24	LINEAR - L297mm SST look profile hdle d/20.5	15,484	15
0140297L30	LINEAR - L297mm brushed black profile hdle d/20.5	15,484	15
0140347L24	LINEAR - L347mm SST look profile hdle d/20.5	17,104	15
0140347L30	LINEAR - L347mm brushed black profile hdle d/20.5	17,104	15
0140397L24	LINEAR - L397mm SST look profile hdle d/20.5	18,879	15
0140397L30	LINEAR - L397mm brushed black profile hdle d/20.5	18,879	15
0140447L24	LINEAR - L447mm SST look profile hdle d/20.5	21,760	10
0140447L30	LINEAR - L447mm brushed black profile hdle d/20.5	21,760	10
0140497L24	LINEAR - L497mm SST look profile hdle d/20.5	23,457	10
0140497L30	LINEAR - L497mm brushed black profile hdle d/20.5	23,457	10
0140597L24	LINEAR - L597mm SST look profile hdle d/20.5	25,181	10
0140597L30	LINEAR - L597mm brushed black profile hdle d/20.5	25,181	10
0140697L24	LINEAR - L697mm SST look profile hdle d/20.5	27,136	10
0140697L30	LINEAR - L697mm brushed black profile hdle d/20.5	27,136	10
0140797L24	LINEAR - L797mm SST look profile hdle d/20.5	32,254	10
0140797L30	LINEAR - L797mm brushed black profile hdle d/20.5	32,254	10
0140897L24	LINEAR - L897mm SST look profile hdle d/20.5	36,344	5
0140897L30	LINEAR - L897mm brushed black profile hdle d/20.5	36,344	5
0140997L24	LINEAR - L997mm SST look profile hdle d/20.5	37,167	5
0140997L30	LINEAR - L997mm brushed black profile hdle d/20.5	37,167	5

0162 KADO

Article	Description	Price EUR	Units/Box
0162160Z01	KADO - CC160L186mm handle polished chrome	10,931	25
0162160Z23	KADO - CC160L186mm handle brushed nickel	12,372	25
0162320Z01	KADO - CC320L346mm handle polished chrome	16,821	25
0162320Z23	KADO - CC320L346mm handle brushed nickel	18,956	25

0163 JEY2

Article	Description	Price EUR	Units/Box
01631197L24	JEY2 - L1197mm SST look alu profile handle	33,72	5
01631197L618	JEY2 - L1197mm brushed brass cava profile handle	38,967	5
01631197LM1	JEY2 - L1197mm white alu profile handle	27,007	5
01631197LM2	JEY2 - L1197mm black alu profile handle	27,007	5
0163147L24	JEY2 - L147mm SST look alu profile handle	5,067	15
0163147L618	JEY2 - L147mm brushed brass cava profile handle	5,864	15
0163147LM1	JEY2 - L147mm white alu profile handle	9,491	15
0163147LM2	JEY2 - L147mm black alu profile handle	9,491	15
0163197L24	JEY2 - L197mm SST look alu profile handle	6,276	15
0163197L618	JEY2 - L197mm brushed brass cava profile handle	7,253	15
0163197LM1	JEY2 - L197mm white alu profile handle	9,8	15
0163197LM2	JEY2 - L197mm black alu profile handle	9,8	15
0163247L24	JEY2 - L247mm SST look alu profile handle	7,511	15
0163247L618	JEY2 - L247mm brushed brass cava profile handle	8,694	15
0163247LM1	JEY2 - L247mm white alu profile handle	10,34	15
0163247LM2	JEY2 - L247mm black alu profile handle	10,34	15
0163297L24	JEY2 - L297mm SST look alu profile handle	8,797	15
0163297L618	JEY2 - L297mm brushed brass cava profile handle	10,16	15
0163297LM1	JEY2 - L297mm white alu profile handle	11,574	15
0163297LM2	JEY2 - L297mm black alu profile handle	11,574	15
01633000LM1	JEY2 - 3000mm matt white alu profile	58,061	15
01633000LM2	JEY2 - 3000mm matt black alu profile	58,061	15
0163347L24	JEY2 - L347mm SST look alu profile handle	10,108	15
0163347L618	JEY2 - L347mm brushed brass cava profile handle	11,677	15
0163347LM1	JEY2 - L347mm white alu profile handle	12,192	15
0163347LM2	JEY2 - L347mm black alu profile handle	12,192	15
0163397L24	JEY2 - L397mm SST look alu profile handle	11,343	15
0163397L618	JEY2 - L397mm brushed brass cava profile handle	13,118	15
0163397LM1	JEY2 - L397mm white alu profile handle	12,5	15
0163397LM2	JEY2 - L397mm black alu profile handle	12,5	15
0163447L24	JEY2 - L447mm SST look alu profile handle	12,655	10
0163447L618	JEY2 - L447mm brushed brass cava profile handle	14,635	10
0163447LM1	JEY2 - L447mm white alu profile handle	14,764	10
0163447LM2	JEY2 - L447mm black alu profile handle	14,764	10
0163497L24	JEY2 - L497mm SST look alu profile handle	13,915	10
0163497L618	JEY2 - L497mm brushed brass cava profile handle	16,101	10
0163497LM1	JEY2 - L497mm white alu profile handle	15,381	10
0163497LM2	JEY2 - L497mm black alu profile handle	15,381	10
0163597L24	JEY2 - L597mm SST look alu profile handle	17,259	10
0163597L618	JEY2 - L597mm brushed brass cava profile handle	19,934	10
0163597LM1	JEY2 - L597mm white alu profile handle	16,024	10
0163597LM2	JEY2 - L597mm black alu profile handle	16,024	10
0163697L24	JEY2 - L697mm SST look alu profile handle	20,062	10
0163697L618	JEY2 - L697mm brushed brass cava profile handle	23,175	10
0163697LM1	JEY2 - L697mm white alu profile handle	16,821	10
0163697LM2	JEY2 - L697mm black alu profile handle	16,821	10
0163797L24	JEY2 - L797mm SST look alu profile handle	22,249	10

0163 JEY2

Article	Description	Price EUR	Units/Box
0163797L618	JEY2 - L797mm brushed brass cava profile handle	25,695	10
0163797LM1	JEY2 - L797mm white alu profile handle	18,210	10
0163797LM2	JEY2 - L797mm black alu profile handle	18,210	10
0163897L24	JEY2 - L897mm SST look alu profile handle	25,669	5
0163897L618	JEY2 - L897mm brushed brass cava profile handle	29,682	5
0163897LM1	JEY2 - L897mm white alu profile handle	23,998	5
0163897LM2	JEY2 - L897mm black alu profile handle	23,998	5
0163997L24	JEY2 - L997mm SST look alu profile handle	29,450	5
0163997L618	JEY2 - L997mm brushed brass cava profile handle	34,054	5
0163997LM1	JEY2 - L997mm white alu profile handle	24,744	5
0163997LM2	JEY2 - L997mm black alu profile handle	24,744	5

0165 CALIN

Article	Description	Price EUR	Units/Box
0165160W00	CALIN - CC160L240mm handle RAW brush	18,725	25
0165160W02	CALIN - CC160L240mm handle white brush	20,191	25
0165160W08	CALIN - CC160L240mm handle brown brush	20,191	25
0165160W09	CALIN - CC160L240mm handle black brush	20,191	25

0166 ECHO

Article	Description	Price EUR	Units/Box
0166060W00	ECHO - D60mm knob RAW brush	10,057	25
0166060W02	ECHO - D60mm knob white brush	10,906	25
0166060W08	ECHO - D60mm knob brown brush	10,906	25
0166060W09	ECHO - D60mm knob black brush	10,906	25

0168 COMO

Article	Description	Price EUR	Units/Box
0168026Z01	COMO - D26mm polished chrome knob	3,575	25
0168026Z03	COMO - D26mm polished black nickel	4,681	25
0168026Z06	COMO - D26mm polished copper	4,681	25
0168026Z07	COMO - D26mm polished brass	4,681	25
0168026Z11	COMO - D26mm matt chrome knob	3,73	25
0168026Z23	COMO - D26mm brushed nickel knob	3,935	25
0168026Z26	COMO - D26mm brushed cooper knob	4,321	25
0168026Z28	COMO - D26mm Brushed gold knob	4,321	25
0168026ZM1	COMO - D26mm matt White knob	4,321	25
0168026ZM2	COMO - D26mm matt black knob	3,472	25
0168041Z01	COMO BIG - D41mm Polished Chrome knob	5,71	25
0168041Z03	COMO BIG - D41mm polished black nickel	7,048	25
0168041Z06	COMO BIG - D41mm polished copper	7,048	25
0168041Z07	COMO BIG - D41mm polished brass	7,048	25
0168041Z11	COMO BIG - D41mm Matt Chrome knob	5,53	25
0168041Z23	COMO BIG - D41mm Brushed Nickel knob	6,713	25
0168041Z26	COMO BIG - D41mm Brushed cooper knob	6,713	25
0168041Z28	COMO BIG - D41mm Brushed gold knob	6,713	25
0168041ZM1	COMO BIG - D41mm Matt white knob	6,713	25
0168041ZM2	COMO BIG - D41mm Matt black knob	5,324	25

0195 SENSE

Article	Description	Price EUR	Units/Box
0195128L01	SENSE - CC128L135mm hdle polished chrome	8,925	25
0195128L24	SENSE - CC128L135mm hdle stainless steel look	7,536	25
0195128L30	SENSE - CC128L135mm hdle brushed black	8,591	25
0195192L01	SENSE - CC192L199mm hdle polished chrome	11,96	25
0195192L24	SENSE - CC192L199mm hdle stainless steel look	10,005	25
0195192L30	SENSE - CC192L199mm hdle brushed black	11,291	25
0195320L01	SENSE - CC320L327mm hdle polished chrome	18,648	25
0195320L24	SENSE - CC320L327mm hdle stainless steel look	14,404	25
0195320L30	SENSE - CC320L327mm hdle brushed black	15,793	25
0195480L01	SENSE - CC480L487mm hdle polished chrome	27,47	25
0195480L24	SENSE - CC480L487mm hdle stainless steel look	21,786	25
0195480L30	SENSE - CC480L487mm hdle brushed black	22,557	25

0206 ARCH

Article	Description	Price EUR	Units/Box
0206192Z01	ARCH - CC192L209mm handle polished chrome	14,198	25
0206192Z23	ARCH - CC192L209mm handle brushed nickel	15,33	25
0206320Z01	ARCH - CC320L338mm handle polished chrome	23,818	25
0206320Z23	ARCH - CC320L338mm handle brushed nickel	25,669	25

0219 ARROW

Article	Description	Price EUR	Units/Box
0219192Z23	ARROW - CC192L223mm brushed nickel handle	18,159	25

0226 REDO

Article	Description	Price EUR	Units/Box
0226128Z23	REDO - CC128L137mm brushed nickel handle	9,877	25
0226128Z26	REDO - CC128L137mm brushed copper handle	10,417	25
0226128Z610	REDO - CC128L137mm pewter handle	9,723	25
0226128Z614	REDO - CC128L137mm antique brass handle	10,227	25
0226192Z23	REDO - CC192L201mm brushed nickel handle	14,172	25
0226192Z26	REDO - CC192L201mm brushed copper handle	13,375	25
0226192Z610	REDO - CC192L201mm pewter handle	12,372	25
0226192Z614	REDO - CC192L201mm antique brass handle	13,233	25

0235 CLOS

Article	Description	Price EUR	Units/Box
0235128Z01	CLOS - CC128L160mm pol chrome pull w/hdle	22,081	25
0235128Z23	CLOS - CC128L160mm brush nickel pull w/hdle	23,419	25
0235128ZM1	CLOS - CC128L160mm matt white pull w/hdle	22,344	25
0235128ZM2	CLOS - CC128L160mm matt black pull w/hdle	22,344	25

0239 ARA W

Article	Description	Price EUR	Units/Box
0239160N2416	ARA W - CC160L220mm oak+SST look hdle	19,779	25
0239160N2417	ARA W - CC160L220mm walnut+SST look hdle	21,811	25
0239224N2416	ARA W - CC224L284mm oak+SST look hdle	22,197	25
0239224N2417	ARA W - CC224L284mm walnut+SST look hdle	25,052	25

0241 ROMA

Article	Description	Price EUR	Units/Box
0241160Z01	ROMA - CC160L175mm polished chrome handle	12,14	25
0241160Z23	ROMA - CC160L175mm brushed nickel handle	13,838	25
0241160Z28	ROMA - CC160L175mm brushed gold handle	15,278	25
0241160ZM2	ROMA - CC160L175mm matt black handle	12,552	25
0241192Z01	ROMA - CC192L207mm polished chrome handle	13,812	25
0241192Z23	ROMA - CC192L207mm brushed nickel handle	15,664	25
0241192Z28	ROMA - CC192L207mm brushed gold handle	16,796	25
0241192ZM2	ROMA - CC192L207mm matt black handle	14,044	25
0241320Z01	ROMA - CC320L335mm polished chrome handle	19,085	25
0241320Z23	ROMA - CC320L335mm brushed nickel handle	21,76	25
0241320Z28	ROMA - CC320L335mm brushed gold handle	23,689	25
0241320ZM2	ROMA - CC320L335mm matt black handle	19,985	25

0243 LOW ST

Article	Description	Price EUR	Units/Box
0243064Z23ST	LOW ST - CC64L78mm br nickel recessed hdle	17,053	25
0243192Z23ST	LOW ST - CC192L206mm br nickel recessed hdle	23,586	25

0250 FORMA

Article	Description	Price EUR	Units/Box
02501197L24	FORMA - L1197mm SST look alu prof hdle d/19	70,244	5
0250147L24	FORMA - L147mm SST look alu profile hdle d/19	8,822	15
0250197L24	FORMA - L197mm SST look alu profile hdle d/19	11,034	15
0250247L24	FORMA - L247mm SST look alu profile hdle d/19	13,786	15
0250297L24	FORMA - L297mm SST look alu profile hdle d/19	16,513	15
0250347L24	FORMA - L347mm SST look alu profile hdle d/19	19,162	15
0250397L24	FORMA - L397mm SST look alu profile hdle d/19	21,966	15
0250447L24	FORMA - L447mm SST look alu profile hdle d/19	24,641	10
0250497L24	FORMA - L497mm SST look alu profile hdle d/19	27,290	10
0250597L24	FORMA - L597mm SST look alu profile hdle d/19	32,923	10
0250697L24	FORMA - L697mm SST look alu profile hdle d/19	38,376	10
0250797L24	FORMA - L797mm SST look alu profile hdle d/19	44,034	10
0250897L24	FORMA - L897mm SST look alu profile hdle d/19	50,181	5
0250997L24	FORMA - L997mm SST look alu profile hdle d/19	55,634	5

0254 / 0255 NOMA

Article	Description	Price EUR	Units/Box
0254128L02	NOMA - CC128L200mm anod bright alu hdle d/19	10,417	25
0254128L24	NOMA - CC128L200mm SST look alu hdle d/19	10,417	25
0254128L30	NOMA - CC128L200mm brushed black hdle d/19	12,351	25
0254128L613	NOMA - CC128L200mm antique bronze hdle d/19	11,652	25
0254128L618	NOMA - CC128L200mm brush brass cava hdle d/19	12,351	25
0254256L02	NOMA - CC256L350mm anod bright alu hdle d/19	15,587	25
0254256L24	NOMA - CC256L350mm SST look alu hdle d/19	15,587	25
0254256L30	NOMA - CC256L350mm brushed black hdle d/19	18,485	25
0254256L613	NOMA - CC256L350mm antique bronze hdle d/19	17,439	25
0254256L618	NOMA - CC256L350mm brush brass cava hdle d/19	18,485	25
0255128L24	NOMA - CC128L200mm SST look alu hdle d/22	10,417	25
0255256L24	NOMA - CC256L350mm SST look alu hdle d/22	15,587	25

0281 FLAT

Article	Description	Price EUR	Units/Box
0281160Z23	FLAT - CC160L175mm bru nickel recess hdle	29,296	25

0301 SENSE MINI

Article	Description	Price EUR	Units/Box
0301096L01	SENSE MINI - CC96L103mm polished chrome hdle	8,308	25
0301096L09	SENSE MINI - CC96L103mm matt black handle	6,353	25
0301096L24	SENSE MINI - CC96L103mm StainST look hdle	5,916	25
0301096L29	SENSE MINI - CC96L103mm brushed dark brass handle	8,565	25
0301160L01	SENSE MINI - CC160L167mm polished chrome hdle	11,009	25
0301160L09	SENSE MINI - CC160L167mm matt black handle	8,385	25
0301160L24	SENSE MINI - CC160L167mm StainST look handle	7,896	25
0301160L29	SENSE MINI - CC160L167mm Brushed dark brass handle	10,623	25
0301256L01	SENSE MINI - CC256L263mm polished chrome hdle	16,153	25
0301256L09	SENSE MINI - CC256L263mm matt black handle	13,632	25
0301256L24	SENSE MINI - CC256L263mm StainST look handle	11,369	25
0301256L29	SENSE MINI - CC256L263mm brushed dark brass handle	14,121	25

0312 ARKO

Article	Description	Price EUR	Units/Box
0312160L24	ARKO - CC160L186mm SST look handle	10,391	25
0312192L24	ARKO - CC192L218mm SST look handle	11,857	25
0312256L24	ARKO - CC256L292mm SST look handle	14,249	25

0322 CUT

Article	Description	Price EUR	Units/Box
03221000L09	CUTT - CC896L1000mm matt black alu hdle	43,726	15
03221000L24	CUTT - CC896L1000mm SST look alu hdle	41,771	15
03221500L09	CUTT - CC1376L1500mm matt black alu hdle	61,576	10
03221500L24	CUTT - CC1376L1500mm SST look alu hdle	58,772	10
0322200L01	CUTT - CC96-128L200mm p chrome alu hdle	19,136	25
0322200L09	CUTT - CC96-128L200mm matt black alu hdle	13,735	25
0322200L24	CUTT - CC96-128L200mm SST look alu hdle	15,844	25
0322400L01	CUTT - CC192-320L400mm p chrome alu hdle	33,463	25
0322400L09	CUTT - CC192-320L400mm matt black alu hdle	23,998	25
0322400L24	CUTT - CC192-320L400mm SST look alu hdle	25,052	25
0322600L01	CUTT - CC320-480L600mm p chrome alu hdle	48,201	25
0322600L09	CUTT - CC320-480L600mm matt black alu hdle	34,054	25
0322600L24	CUTT - CC320-480L600mm SST look alu hdle	34,620	25

0334 BRIKK

Article	Description	Price EUR	Units/Box
03341190L24	BRIKK - 1190mm SST look alu profile handle	71,170	5
03341190L613	BRIKK - 1190mm antique bronze profile hdle	71,170	5
0334140L24	BRIKK - 140mm SST look alu profile handle	12,320	15
0334140L613	BRIKK - 140mm antique bronze profile hdle	13,941	15
0334190L24	BRIKK - 190mm SST look alu profile handle	14,224	15
0334240L24	BRIKK - 240mm SST look alu profile handle	16,590	15
0334290L24	BRIKK - 290mm SST look alu profile handle	18,673	15
0334290L613	BRIKK - 290mm antique bronze profile hdle	21,117	15
0334340L24	BRIKK - 340mm SST look alu profile handle	21,143	15
0334390L24	BRIKK - 390mm SST look alu profile handle	24,203	15
0334440L24	BRIKK - 440mm SST look alu profile handle	26,853	10
0334490L24	BRIKK - 490mm SST look alu profile handle	29,399	10
0334490L613	BRIKK - 490mm antique bronze profile hdle	33,231	10
0334590L24	BRIKK - 590mm SST look alu profile handle	33,463	10
0334690L24	BRIKK - 690mm SST look alu profile handle	38,890	10
0334790L24	BRIKK - 790mm SST look alu profile handle	44,600	10
0334890L24	BRIKK - 890mm SST look alu profile handle	50,284	5
0334990L24	BRIKK - 990mm SST look alu profile handle	55,994	5

0340 BARCCO

Article	Description	Price EUR	Units/Box
0340200W00	BARCCO - CC160L200mm "raw" beech knob	16,950	25
0340200W18	BARCCO - CC160L200mm natural ash knob	18,673	25
0340200W19	BARCCO - CC160L200mm walnut color knob	20,500	25
0340400W00	BARCCO - CC320L400mm "raw" beech knob	23,509	25
0340400W18	BARCCO - CC320L400mm natural ash knob	26,621	25
0340400W19	BARCCO - CC320L400mm walnut color knob	35,263	25
0340600W00	BARCCO - CC480L600mm "raw" beech knob	39,482	25
0340600W18	BARCCO - CC480L600mm natural ash knob	46,658	25
0340600W19	BARCCO - CC480L600mm walnut color knob	54,323	25

0343 GRADA



Article	Description	Price EUR	Units/Box
03431197L04	GRADA - 1197mm matt anodized alu profile	21,657	5
03431197L24	GRADA - 1197mm SST look alu profile	26,364	5
03431197LM1	GRADA - 1197mm white alu profile	24,666	5
03431197LM2	GRADA - 1197mm black alu profile	24,666	5
0343147L04	GRADA - 147mm matt anodized alu profile	5,247	15
0343147L24	GRADA - 147mm SST look alu profile	6,533	15
0343147LM1	GRADA - 147mm white alu profile	9,208	15
0343147LM2	GRADA - 147mm black alu profile	9,208	15
0343197L04	GRADA - 197mm matt anodized alu profile	5,556	15
0343197L24	GRADA - 197mm SST look alu profile	7,613	15
0343197LM1	GRADA - 197mm white alu profile	9,440	15
0343197LM2	GRADA - 197mm black alu profile	9,440	15
0343247L04	GRADA - 247mm matt anodized alu profile	6,096	15
0343247L24	GRADA - 247mm SST look alu profile	8,565	15
0343247LM1	GRADA - 247mm white alu profile	9,877	15
0343247LM2	GRADA - 247mm black alu profile	9,877	15
0343297L04	GRADA - 297mm matt anodized alu profile	6,559	15
0343297L24	GRADA - 297mm SST look alu profile	9,337	15
0343297LM1	GRADA - 297mm white alu profile	11,009	15
0343297LM2	GRADA - 297mm black alu profile	11,009	15
03433000L02	GRADA - 3000mm bright anod alu profile	29,234	15
03433000L04	GRADA - 3000mm matt anodized alu profile	22,829	15
03433000L24	GRADA - 3000mm SST look alu profile	28,623	15
03433000LM1	GRADA - 3000mm matt white alu profile	53,606	15
03433000LM2	GRADA - 3000mm matt black alu profile	53,606	15
0343347L04	GRADA - 347mm matt anodized alu profile	7,228	15
0343347L24	GRADA - 347mm SST look alu profile	10,391	15
0343347LM1	GRADA - 347mm white alu profile	11,549	15
0343347LM2	GRADA - 347mm black alu profile	11,549	15
0343397L04	GRADA - 397mm matt anodized alu profile	8,205	15
0343397L24	GRADA - 397mm SST look alu profile	11,677	15
0343397LM1	GRADA - 397mm white alu profile	11,754	15
0343397LM2	GRADA - 397mm black alu profile	11,754	15
0343447L04	GRADA - 447mm matt anodized alu profile	9,054	10
0343447L24	GRADA - 447mm SST look alu profile	12,963	10
0343447LM1	GRADA - 447mm white alu profile	13,941	10
0343447LM2	GRADA - 447mm black alu profile	13,941	10
0343497L04	GRADA - 497mm matt anodized alu profile	9,748	10
0343497L24	GRADA - 497mm SST look alu profile	13,941	10
0343497LM1	GRADA - 497mm white alu profile	14,455	10
0343497LM2	GRADA - 497mm black alu profile	14,455	10
0343597L04	GRADA - 597mm matt anodized alu profile	10,906	10
0343597L24	GRADA - 597mm SST look alu profile	15,767	10
0343597LM1	GRADA - 597mm white alu profile	14,892	10
0343597LM2	GRADA - 597mm black alu profile	14,892	10
0343697L04	GRADA - 697mm matt anodized alu profile	12,063	10
0343697L24	GRADA - 697mm SST look alu profile	17,593	10
0343697LM1	GRADA - 697mm white profile	15,510	10
0343697LM2	GRADA - 697mm black profile	15,510	10
0343797L04	GRADA - 797mm matt anodized alu profile	13,401	10
0343797L24	GRADA - 797mm SST look alu profile	19,291	10
0343797LM1	GRADA - 797mm white alu profile	16,667	10
0343797LM2	GRADA - 797mm black alu profile	16,667	10
0343897L04	GRADA - 897mm matt anodized alu profile	15,818	5
0343897L24	GRADA - 897mm SST look alu profile	21,554	5
0343897LM1	GRADA - 897mm white alu profile	22,223	5
0343897LM2	GRADA - 897mm black alu profile	22,223	5
0343997L04	GRADA - 997mm matt anodized alu profile	17,259	5
0343997L24	GRADA - 997mm SST look alu profile	23,380	5
0343997LM1	GRADA - 997mm white alu profile	22,763	5
0343997LM2	GRADA - 997mm black alu profile	22,763	5

0366 CUBIC

Article	Description	Price EUR	Units/Box
0366160ZM1	CUBIC - 160mm matt white sliding door pull	8,37	25
0366160ZM2	CUBIC - 160mm matt black sliding door pull	8,37	25

0369 RITA

Article	Description	Price EUR	Units/Box
0369064L01	RITTA - CC64L130mm polished chrome hdle	11,034	25
0369064L09	RITTA - CC64L130mm matt black hdle	8,668	25
0369064L24	RITTA - CC64L130mm stainless steel look hdle	8,282	25
0369128L01	RITTA - CC128L260mm polished chrome hdle	18,596	25
0369128L09	RITTA - CC128L260mm matt black hdle	12,475	25
0369128L24	RITTA - CC128L260mm stainless steel look hdle	11,909	25

0372 ONA

Article	Description	Price EUR	Units/Box
0372032L24	ONA - CC32L50mm stainless steel look hdle	5,607	25
0372032L29	ONA - CC32L50mm brush dark brass hdle	6,424	25
0372032L30	ONA - CC32L50mm brushed black handle	6,060	25
0372032L31	ONA - CC32L50mm brushed grey handle	6,060	25
0372032LM1	ONA - CC32L50mm matt white handle	5,530	25
0372032LM23	ONA - CC32L50mm "metallic grey" handle	6,430	25
0372032LM41	ONA - CC32L50mm "metallic brown" handle	6,430	25
03721056L24	ONA - CC1056L1100mm stainless steel lk hdle	40,359	15
03721056L29	ONA - CC1056L1100mm brush dark brass handle	44,194	15
03721056L30	ONA - CC1056L1100mm brushed black handle	40,359	15
03721056L31	ONA - CC1056L1100mm brushed grey handle	44,111	15
03721056LM1	ONA - CC1056L1100mm matt white handle	33,952	15
03721056LM23	ONA - CC1056L1100mm "metallic grey" handle	37,012	15
03721056LM41	ONA - CC1056L1100mm "metallic brown" handle	37,012	15
0372128L24	ONA - CC128L200mm stainless steel look hdle	7,511	25
0372128L29	ONA - CC128L200mm brush dark brass handle	8,665	25
0372128L30	ONA - CC128L200mm brushed black handle	7,968	25
0372128L31	ONA - CC128L200mm brushed grey handle	8,339	25
0372128LM1	ONA - CC128L200mm matt white handle	8,642	25
0372128LM23	ONA - CC128L200mm "metallic grey" handle	9,825	25
0372128LM41	ONA - CC128L200mm "metallic brown" handle	9,825	25
03721440L24	ONA - CC1440L1500mm stainless steel lk hdle	55,917	10
03721440L29	ONA - CC1440L1500mm brush dark brass handle	67,630	10
03721440L30	ONA - CC1440L1500mm brushed black handle	57,718	10
03721440L31	ONA - CC1440L1500mm brushed grey handle	57,718	10
03721440LM1	ONA - CC1440L1500mm matt white handle	59,287	10
03721440LM23	ONA - CC1440L1500mm "metallic grey" handle	63,093	10
03721440LM41	ONA - CC1440L1500mm "metallic brown" handle	63,093	10
0372256L24	ONA - CC256L350mm stainless steel look handle	11,703	25
0372256L29	ONA - CC256L350mm brush dark brass handle	13,353	25
0372256L30	ONA - CC256L350mm brushed black handle	12,449	25
0372256L31	ONA - CC256L350mm brushed grey handle	13,465	25

0372 ONA

Article	Description	Price EUR	Units/Box
0372256LM1	ONA - CC256L350mm matt white handle	12,192	25
0372256LM23	ONA - CC256L350mm "metallic grey" handle	13,735	25
0372256LM41	ONA - CC256L350mm "metallic brown" handle	13,735	25
0372544L24	ONA - CC544L600mm stainless steel look hdl	21,374	25
0372544L29	ONA - CC544L600mm brush dark brass handle	24,592	25
0372544L30	ONA - CC544L600mm brushed black handle	23,200	25
0372544L31	ONA - CC544L600mm brushed grey handle	23,200	25
0372544LM1	ONA - CC544L600mm matt white handle	20,988	25
0372544LM23	ONA - CC544L600mm "metallic grey" handle	22,994	25
0372544LM41	ONA - CC544L600mm "metallic brown" handle	22,994	25

0373 NICK

Article	Description	Price EUR	Units/Box
0373032Z01	NICK - CC32L50mm polished chrome knob	5,041	25
0373032Z23	NICK - CC32L50mm brushed nickel knob	5,401	25
0373032Z26	NICK - CC32L50mm brushed copper knob	5,659	25
0373032Z27	NICK - CC32L50mm brushed brass knob	5,659	25
0373160Z01	NICK - CC160L178mm polished chrome knob	13,246	25
0373160Z23	NICK - CC160L178mm brushed nickel knob	14,146	25
0373160Z26	NICK - CC160L178mm brushed copper knob	14,532	25
0373160Z27	NICK - CC160L178mm brushed brass knob	14,532	25

0374 BALL

Article	Description	Price EUR	Units/Box
0374024Z01	BALL - Diam 24mm polished chrome knob	4,475	25
0374024Z23	BALL - Diam 24mm brushed nickel knob	4,424	25
0374024Z27	BALL - Diam 24mm brushed brass knob	6,636	25
0374029Z01	BALL - Diam 29mm polished chrome knob	6,302	25
0374029Z23	BALL - Diam 29mm brushed nickel knob	6,302	25
0374029Z27	BALL - Diam 29mm brushed brass knob	8,668	25

0375 VANN

Article	Description	Price EUR	Units/Box
0375064L02	VANN - CC64L100mm anodized bright handle	7,433	25
0375064L04	VANN - CC64L100mm anodized matt handle	6,379	25
0375064L09	VANN - CC64L100mm matt black handle	6,945	25
0375064L24	VANN - CC64L100mm stainless steel look hdl	6,945	25
0375064L29	VANN - CC64L100mm brushed dark brass hdl	6,945	25
03751120L04	VANN - CC1120L1200mm anodized matt hdl	36,112	15
03751120L09	VANN - CC1120L1200mm matt black hdl	37,475	15
03751120L24	VANN - CC1120L1200mm stainless stell lk hdl	38,041	15
03751120L29	VANN - CC1120L1200mm brush dk brass hdl	38,556	15
0375128L02	VANN - CC128L200mm anodized bright handle	9,877	25
0375128L04	VANN - CC128L200mm anodized matt handle	8,462	25
0375128L09	VANN - CC128L200mm matt black handle	9,517	25
0375128L24	VANN - CC128L200mm stainless steel look hdl	9,028	25

0375 VANN

Article	Description	Price EUR	Units/Box
0375128L29	VANN - CC128L200mm brushed dark brass hdl	9,208	25
0375256L02	VANN - CC256L350mm anodized bright handle	15,330	25
0375256L04	VANN - CC256L350mm anodized matt handle	13,015	25
0375256L09	VANN - CC256L350mm matt black handle	14,841	25
0375256L24	VANN - CC256L350mm stainless steel look hdl	14,172	25
0375256L29	VANN - CC256L350mm brushed dark brass hdl	14,172	25

0376 BOXX

Article	Description	Price EUR	Units/Box
0376012Z01	BOXX - 15x15mm polished chrome knob	4,244	25
0376012Z11	BOXX - 15x15mm matt chrome knob	4,527	25
0376012Z23	BOXX - 15x15mm brushed nickel knob	4,115	25
0376012ZM2	BOXX - 15x15mm matt black knob	3,652	25

0380 STEEP

Article	Description	Price EUR	Units/Box
03803000L02	STEEP - L3000 D/19 45° anodized bright profile	31,826	15
03803000L24	STEEP - L3000 D/19 45° stainless steel lk profile	31,098	15
03803000LM2	STEEP - L3000 D/19 45° matt black profile	54,218	15

0390 PETRA

Article	Description	Price EUR	Units/Box
0390064Z612	PETRA - CC64L97mm antique silver cup pull hdl	11,009	25
0390064Z66	PETRA - CC64L97mm antique copper cup pull hdl	9,028	25
0390064ZM2	PETRA - CC64L97mm matt black cup pull hdl	7,793	25

0391 AURA

Article	Description	Price EUR	Units/Box
0391064Z612	AURA - CC64L87mm antique silver cup pull hdl	9,748	25
0391064Z66	AURA - CC64L87mm antique copper cup pull hdl	7,948	25

0392 ORION

Article	Description	Price EUR	Units/Box
0392128Z612	ORION - CC128L135mm antique silver handle	10,571	25
0392128Z66	ORION - CC128L135mm antique copper handle	10,16	25

0393 DUKE

Article	Description	Price EUR	Units/Box
0393031Z01	DUKE - D31mm polished chrome knob	5,764	25
0393031Z23	DUKE - D31mm brushed nickel knob	6,052	25
0393031Z26	DUKE - D31mm brushed copper knob	6,340	25
0393031Z27	DUKE - D31mm brushed brass knob	6,489	25
0393031Z610	DUKE - D31mm pewter knob	6,235	25
0393031Z612	DUKE - D31mm antique silver knob	10,391	25
0393031Z614	DUKE - D31mm antique brass knob	6,384	25
0393031Z66	DUKE - D31mm antique copper knob	8,205	25
0393031ZM1	DUKE - D31mm matt white knob	6,325	25
0393031ZM2	DUKE - D31mm matt black knob	6,327	25

0394 AVA

Article	Description	Price EUR	Units/Box
0394096Z610	AVA - CC96L128mm pewter handle	7,433	25
0394096Z614	AVA - CC96L128mm antique brass handle	7,691	25

0404 FLEXA

Article	Description	Price EUR	Units/Box
0404070P2601	FLEXA - 22x70mm beige leather+chrome hdle	13,555	25
0404070P2610	FLEXA - 22x70mm beige leather+pewter hdle	13,555	25
0404070P2627	FLEXA - 22x70mm beige leather+brass hdle	13,555	25
0404070P26M2	FLEXA - 22x70mm beige leather+black hdle	13,555	25
0404070P3601	FLEXA - 22x70mm brown leather+chrome hdle	13,555	25
0404070P3610	FLEXA - 22x70mm brown leather+pewter hdle	13,555	25
0404070P3627	FLEXA - 22x70mm brown leather+brass hdle	13,555	25
0404070P36M2	FLEXA - 22x70mm brown leather+black hdle	13,555	25
0404070P9901	FLEXA - 22x70mm black leather+chrome hdle	13,555	25
0404070P9910	FLEXA - 22x70mm black leather+pewter hdle	13,555	25
0404070P9927	FLEXA - 22x70mm black leather+brass hdle	13,555	25
0404070P99M2	FLEXA - 22x70mm black leather+black hdle	13,555	25
0404128P2601	FLEXA - CC128L150mm beige leather+chrome hdle	18,982	25
0404128P2610	FLEXA - CC128L150mm beige leather+pewter hdle	18,982	25

0404 FLEXA

Article	Description	Price EUR	Units/Box
0404128P2627	FLEXA - CC128L150mm beige leather+brass hdle	18,982	25
0404128P26M2	FLEXA - CC128L150mm beige leather+black hdle	18,982	25
0404128P3601	FLEXA - CC128L150mm brown leather+chrome hdle	18,982	25
0404128P3610	FLEXA - CC128L150mm brown leather+pewter hdle	18,982	25
0404128P3627	FLEXA - CC128L150mm brown leather+brass hdle	18,982	25
0404128P36M2	FLEXA - CC128L150mm brown leather+black hdle	18,982	25
0404128P9901	FLEXA - CC128L150mm black leather+chrome hdle	18,982	25
0404128P9910	FLEXA - CC128L150mm black leather+pewter hdle	18,982	25
0404128P9927	FLEXA - CC128L150mm black leather+brass hdle	18,982	25
0404128P99M2	FLEXA - CC128L150mm black leather+black hdle	18,982	25
0404160P2601	FLEXA - CC160L182mm beige leather+chrome hdle	19,548	25
0404160P2610	FLEXA - CC160L182mm beige leather+pewter hdle	19,548	25
0404160P2627	FLEXA - CC160L182mm beige leather+brass hdle	19,548	25
0404160P26M2	FLEXA - CC160L182mm beige leather+black hdle	19,548	25
0404160P3601	FLEXA - CC160L182mm brown leather+chrome hdle	19,548	25
0404160P3610	FLEXA - CC160L182mm brown leather+pewter hdle	19,548	25
0404160P3627	FLEXA - CC160L182mm brown leather+brass hdle	19,548	25
0404160P36M2	FLEXA - CC160L182mm brown leather+black hdle	19,548	25
0404160P9901	FLEXA - CC160L182mm black leather+chrome hdle	19,548	25
0404160P9910	FLEXA - CC160L182mm black leather+pewter hdle	19,548	25
0404160P9927	FLEXA - CC160L182mm black leather+brass hdle	19,548	25
0404160P99M2	FLEXA - CC160L182mm black leather+black hdle	19,548	25

0405 RAVIOLO

Article	Description	Price EUR	Units/Box
0405029Z610	RAVIOLO - 29x27mm pewter knob	4,962	25
0405029Z614	RAVIOLO - 29x27mm antique brass knob	5,226	25
0405096Z610	RAVIOLO - CC96L172mm pewter handle	9,496	25
0405096Z614	RAVIOLO - CC96L172mm antique brass hdle	9,926	25

0410 BUTTON

Article	Description	Price EUR	Units/Box
0410160Z610	BUTTON - CC160L175 pewter handle	12,719	25
0410160Z614	BUTTON - CC160L175 antique brass handle	13,676	25
0410160ZM2	BUTTON - CC160L175 matt black handle	12,449	25

0430 GRAF MINI

Article	Description	Price EUR	Units/Box
0430010L24	GRAF MINI - 10x33mm stainless steel look knob	3,189	25
0430010L291	GRAF MINI - 10x33mm brushed brass knob	3,241	25
0430010L30	GRAF MINI - 10x33mm brushed black knob	3,241	25
0430060L24	GRAF MINI - 60x33mm stainless steel look T knob	7,485	25
0430060L291	GRAF MINI - 60x33mm brushed brass T knob	7,588	25
0430060L30	GRAF MINI - 60x33mm brushed black T knob	7,588	25
04301178L24	GRAF MINI - CC1178L1200mm stainless steel lk hdle	44,806	10
04301178L291	GRAF MINI - CC1178L1200mm brushed brass hdle	45,423	10
04301178L30	GRAF MINI - CC1178L1200mm brushed black hdle	45,423	10
0430160L24	GRAF MINI - CC160L182mm stainless steel look hdle	12,500	25
0430160L291	GRAF MINI - CC160L182mm brushed brass hdle	12,680	25
0430160L30	GRAF MINI - CC160L182mm brushed black hdle	12,680	25
0430256L24	GRAF MINI - CC256L278mm stainless steel look hdle	15,535	25
0430256L291	GRAF MINI - CC256L278mm brushed brass hdle	15,741	25
0430256L30	GRAF MINI - CC256L278mm brushed black hdle	15,741	25

0434 / 0435/ 0436 VECTOR

Article	Description	Price EUR	Units/Box
04341197L24	VECTOR - L1197mm SST look alu profil hdle d/19	56,090	5
04341197L30	VECTOR - L1197mm brushed black profil hdle d/19	56,090	5
04341197L31	VECTOR - L1197mm brushed grey profil hdle d/19	56,090	5
0434147L24	VECTOR - L147mm SST look alu profile hdle d/19	12,184	15
0434147L30	VECTOR - L147mm brushed black profile hdle d/19	12,184	15
0434147L31	VECTOR - L147mm brushed grey profile hdle d/19	12,184	15
0434197L24	VECTOR - L197mm SST look alu profile hdle d/19	13,745	15
0434197L30	VECTOR - L197mm brushed black profile hdle d/19	13,745	15
0434197L31	VECTOR - L197mm brushed grey profile hdle d/19	13,745	15
0434247L24	VECTOR - L247mm SST look alu profile hdle d/19	15,386	15
0434247L30	VECTOR - L247mm brushed black profile hdle d/19	15,386	15
0434247L31	VECTOR - L247mm brushed grey profile hdle d/19	15,386	15
0434297L24	VECTOR - L297mm SST look alu profile hdle d/19	16,940	15
0434297L30	VECTOR - L297mm brushed black profile hdle d/19	16,940	15
0434297L31	VECTOR - L297mm brushed grey profile hdle d/19	16,940	15
0434347L24	VECTOR - L347mm SST look alu profile hdle d/19	18,928	15
0434347L30	VECTOR - L347mm brushed black profile hdle d/19	18,928	15
0434347L31	VECTOR - L347mm brushed grey profile hdle d/19	18,928	15
0434397L24	VECTOR - L397mm SST look alu profile hdle d/19	21,173	15
0434397L30	VECTOR - L397mm brushed black profile hdle d/19	21,173	15
0434397L31	VECTOR - L397mm brushed grey profile hdle d/19	21,173	15
0434447L24	VECTOR - L447mm SST look alu profile hdle d/19	23,162	10
0434447L30	VECTOR - L447mm brushed black profile hdle d/19	23,162	10
0434447L31	VECTOR - L447mm brushed grey profile hdle d/19	23,162	10
0434497L24	VECTOR - L497mm SST look alu profile hdle d/19	25,060	10
0434497L30	VECTOR - L497mm brushed black profile hdle d/19	25,060	10
0434497L31	VECTOR - L497mm brushed grey profile hdle d/19	25,060	10
0434597L24	VECTOR - L597mm SST look alu profile hdle d/19	29,124	10
0434597L30	VECTOR - L597mm brushed black profile hdle d/19	29,124	10
0434597L31	VECTOR - L597mm brushed grey profile hdle d/19	29,124	10
0434697L24	VECTOR - L697mm SST look alu profile hdle d/19	33,098	10
0434697L30	VECTOR - L697mm brushed black profile hdle d/19	33,098	10
0434697L31	VECTOR - L697mm brushed grey profile hdle d/19	33,098	10
0434797L24	VECTOR - L797mm SST look alu profile hdle d/19	37,252	10
0434797L30	VECTOR - L797mm brushed black profile hdle d/19	37,252	10
0434797L31	VECTOR - L797mm brushed grey profile hdle d/19	37,252	10
0434897L24	VECTOR - L897mm SST look alu profile hdle d/19	40,961	5

0434 / 0435/ 0436 VECTOR

Article	Description	Price EUR	Units/Box
0434897L30	VECTOR - L897mm brushed black profile hdle d/19	40,961	5
0434897L31	VECTOR - L897mm brushed grey profile hdle d/19	40,961	5
0434997L24	VECTOR - L997mm SST look alu profile hdle d/19	45,202	5
0434997L30	VECTOR - L997mm brushed black profile hdle d/19	45,202	5
0434997L31	VECTOR - L997mm brushed grey profile hdle d/19	45,202	5

0444 PEAK

Article	Description	Price EUR	Units/Box
0444064L24	PEAK - CC64L120mm stainless st look hdle	11,291	25
0444064L30	PEAK - CC64L120mm brushed black handle	12,423	25
0444064LM1	PEAK - CC64L120mm matt white handle	9,208	25
0444064LM23	PEAK - CC64L120mm metallic grey handle	10,263	25
0444064LM41	PEAK - CC64L120mm metallic brown handle	10,263	25
04441120L24	PEAK-CC160-1120L1150mm SST look hdle	54,734	15
04441120L30	PEAK-CC160-1120L1150mm brush black hdle	59,261	15
04441120LM1	PEAK-CC160-1120L1150mm matt white hdle	64,534	15
04441120LM23	PEAK - CC160-1120L1150mm metallic grey hdle	67,492	15
04441120LM41	PEAK - CC160-1120L1150mm metallic brown hdle	67,492	15
04441760L24	PEAK - CC160-1760L1800mm stainless st look hdle	97,868	10
04441760L30	PEAK - CC160-1760L1800mm brushed black hdle	99,566	10
04441760LM1	PEAK - CC160-1760L1800mm matt white hdle	104,170	10
04441760LM23	PEAK - CC160-1760L1800mm metallic grey hdle	107,488	10
04441760LM41	PEAK - CC160-1760L1800mm metallic brown hdle	107,488	10
0444192L24	PEAK - CC160-192L250mm stainless st look hdle	19,676	25
0444192L30	PEAK - CC160-192L250mm brushed black handle	21,348	25
0444192LM1	PEAK - CC160-192L250mm matt white handle	16,821	25
0444192LM23	PEAK - CC160-192L250mm metallic grey handle	17,953	25
0444192LM41	PEAK - CC160-192L250mm metallic brown handle	17,953	25
0444448L24	PEAK - CC160-448L500mm stainless st look handle	28,216	25
0444448L30	PEAK - CC160-448L500mm brushed black handle	30,171	25
0444448LM1	PEAK - CC160-448L500mm matt white handle	28,602	25
0444448LM23	PEAK - CC160-448L500mm metallic grey handle	30,351	25
0444448LM41	PEAK - CC160-448L500mm metallic brown handle	30,351	25
0444768L24	PEAK - CC160-768L800mm stainless ST look hdle	41,025	15
0444768L30	PEAK - CC160-768L800mm brushed black handle	42,594	15
0444768LM1	PEAK - CC160-768L800mm matt white handle	43,185	15
0444768LM23	PEAK - CC160-768L800mm metallic grey handle	45,114	15
0444768LM41	PEAK - CC160-768L800mm metallic brown handle	45,114	15

0446 ESTE

Artículo	Descripción	Precio EUR	U/Caja
0446160Z01	ESTE -CC160L171mm polished chrome handle	7,768	25
0446160Z11	ESTE -CC160L171mm matt chrome handle	7,099	25
0446160Z23	ESTE -CC160L171mm brushed nickel handle	10,031	25
0446160Z26	ESTE -CC160L171mm brushed cooper handle	10,031	25
0446160Z28	ESTE -CC160L171mm brushed gold handle	9,182	25
0446160Z617	ESTE -CC160L171mm graphite grey handle	7,099	25
0446160ZM2	ESTE -CC160L171mm matt black handle	7,099	25

0447 BELLA

Article	Description	Price EUR	Units/Box
0447160Z26	BELLA-CC160L176mm brushed cooper handle	10,906	25
0447160Z28	BELLA-CC160L176mm brushed gold handle	10,906	25
0447160Z617	BELLA-CC160L176mm graphite grey handle	7,588	25
0447160ZM2	BELLA-CC160L176mm matt black handle	7,588	25

0449 HEXXA

Article	Description	Price EUR	Units/Box
0449035ZM1A	HEXXA-A cover profile white matt	5,299	25
0449035ZM1B	HEXXA-B cover profile white matt	5,299	25
0449035ZM23A	HEXXA-A cover profile metal grey	5,299	25
0449035ZM23B	HEXXA-B cover profile metal grey	5,299	25
0449035ZM2A	HEXXA-A cover profile matt black	5,299	25
0449035ZM2B	HEXXA-B cover profile matt black	5,299	25
0449035ZM41A	HEXXA-A cover profile metal brown	5,299	25
0449035ZM41B	HEXXA-B cover profile metal brown	5,299	25
04491100LM1	HEXXA-1100mm Set profile+covers matt white	41,179	15
04491100LM2	HEXXA-1100mm Set profile+covers matt black	41,179	15
04491100LM23	HEXXA-1100mm Set profile+covers metal grey	43,571	15
04491100LM41	HEXXA-1100mm Set profile+covers metal brown	43,571	15
0449200LM1	HEXXA-200mm Set profile+covers matt white	15,613	25
0449200LM2	HEXXA-200mm Set profile+covers matt black	15,613	25
0449200LM23	HEXXA-200mm Set profile+covers metal grey	16,487	25
0449200LM41	HEXXA-200mm Set profile+covers metal brown	16,487	25
04493000LM1	HEXXA-3000mm Profile aluminium matt white	93,847	10
04493000LM2	HEXXA-3000mm Profile aluminium matt black	93,847	10
04493000LM23	HEXXA-3000mm Profile aluminium metal grey	98,972	10
04493000LM41	HEXXA-3000mm Profile aluminium metal brown	98,972	10
0449350LM1	HEXXA-350mm Set profile+covers matt white	19,831	25
0449350LM2	HEXXA-350mm Set profile+covers matt black	19,831	25
0449350LM23	HEXXA-350mm Set profile+covers metal grey	20,988	25
0449350LM41	HEXXA-350mm Set profile+covers metal brown	20,988	25

0451 FELTRE

Article	Description	Price EUR	Units/Box
0451192Z23	FELTRE-CC192L218mm brushed nickel handle	13,272	25
0451192Z617	FELTRE-CC192L218mm graphite grey handle	9,954	25
0451192ZM2	FELTRE-CC192L218mm matt black handle	9,954	25

0452 BRAVE

Article	Description	Price EUR	Units/Box
04521120FM1	BRAVE - CC1120L1150mm matt white handle	29,373	15
04521120FM2	BRAVE - CC1120L1150mm matt black handle	29,373	15
04521120FM23	BRAVE - CC1120L1150mm metallic grey handle	31,019	15
04521120FM41	BRAVE - CC1120L1150mm metallic brown handle	31,019	15
0452128FM1	BRAVE - CC128L160mm matt white handle	7,099	25
0452128FM2	BRAVE - CC128L160mm matt black handle	7,099	25
0452128FM23	BRAVE - CC128L160mm metallic grey handle	8,179	25
0452128FM41	BRAVE - CC128L160mm metallic brown handle	8,179	25
0452192FM1	BRAVE - CC192L240mm matt white handle	8,642	25
0452192FM2	BRAVE - CC192L240mm matt black handle	8,642	25
0452192FM23	BRAVE - CC192L240mm metallic grey handle	9,723	25
0452192FM41	BRAVE - CC192L240mm metallic brown handle	9,723	25
0452320FM1	BRAVE - CC320L400mm matt white handle	11,600	25
0452320FM2	BRAVE - CC320L400mm matt black handle	11,600	25
0452320FM23	BRAVE - CC320L400mm metallic grey handle	12,783	25
0452320FM41	BRAVE - CC320L400mm metallic brown handle	12,783	25
0452480FM1	BRAVE - CC480L600mm matt white handle	14,790	25
0452480FM2	BRAVE - CC480L600mm matt black handle	14,790	25
0452480FM23	BRAVE - CC480L600mm metallic grey handle	16,178	25
0452480FM41	BRAVE - CC480L600mm metallic brown handle	16,178	25
0452992FM1	BRAVE - CC992L1040mm matt white off-center hdl	26,621	15
0452992FM2	BRAVE - CC992L1040mm matt black off-center hdl	26,621	15
0452992FM23	BRAVE - CC992L1040mm metallic grey off-center hdl	28,190	15
0452992FM41	BRAVE - CC992L1040mm metallic brown off-center hdl	28,190	15

0459 LINES

Article	Description	Price EUR	Units/Box
0459160Z23	LINES - CC160L170mm brushed nickel hdl	11,677	25
0459160Z28	LINES - CC160L170mm brushed gold hdl	13,221	25
0459160Z32	LINES - CC160L170mm brushed mole grey hdl	13,221	25
0459160ZM2	LINES - CC160L170 matt black handle	10,931	25
0459320Z23	LINES - CC320L330mm brushed nickel hdl	24,152	25
0459320Z28	LINES - CC320L330mm brushed gold hdl	26,235	25
0459320Z32	LINES - CC320L330mm brushed mole grey hdl	26,235	25
0459320ZM2	LINES - CC320L330mm matt black hdl	21,863	25

0486 GRAF BIG

Article	Description	Price EUR	Units/Box
0486038L24	GRAF BIG-Stainless steel look knob D38mm	13,632	25
0486038L291	GRAF BIG-Brushed brass knob D38mm	13,632	25
0486038L30	GRAF BIG-Brushed black knob D38mm	13,632	25
0486050L24	GRAF BIG-Stainless steel look knob D50mm	18,468	25
0486050L291	GRAF BIG-Brushed brass knob D50mm	18,468	25
0486050L30	GRAF BIG-Brushed black knob D50mm	18,468	25
04861168L24	GRAF BIG-Stainless steel look CC1168L1200mm	55,017	10
04861168L291	GRAF BIG-Brushed brass CC1168L1200mm	55,017	10
04861168L30	GRAF BIG-Brushed black CC1168L1200mm	55,017	10
0486192L24	GRAF BIG-Stainless steel look CC192L224mm	18,648	25
0486192L291	GRAF BIG-Brushed brass CC192L224mm	18,648	25
0486192L30	GRAF BIG-Brushed black CC192L224mm	18,648	25
0486320L24	GRAF BIG-Stainless steel look CC320L352mm	22,017	25
0486320L291	GRAF BIG-Brushed brass CC320L352mm	22,017	25
0486320L30	GRAF BIG-Brushed black CC320L352mm	22,017	25

0487 PURA

Article	Description	Price EUR	Units/Box
0487160Z01	PURA - CC160L168 polished chrome handle	8,565	25
0487160Z03	PURA - CC160L168 polished black nickel handle	10,211	25
0487160Z06	PURA - CC160L168 polished copper handle	10,211	25
0487160Z07	PURA - CC160L168 polished brass handle	10,211	25
0487160Z23	PURA - CC160L168 brushed nickel handle	11,203	25
0487160Z618	PURA - CC160L168 brushed brass cava handle	12,331	25
0487160ZM2	PURA - CC160L168 matt black handle	9,466	25
0487256Z01	PURA - CC256L264 polished chrome handle	15,979	25
0487256Z03	PURA - CC256L264 Glossy titanium black handle	18,410	25
0487256Z06	PURA - CC256L264 polished copper handle	18,410	25
0487256Z07	PURA - CC256L264 polished brass handle	18,410	25
0487256Z23	PURA - CC256L264 brushed nickel handle	18,497	25
0487256Z618	PURA - CC256L264 brushed brass cava handle	19,279	25
0487256ZM2	PURA - CC256L264 matt black handle	15,458	25

0489 BOL

Article	Description	Price EUR	Units/Box
0489045NM222	BOL - D45mm matt black+sapelli wood knob	11,446	25
0489045NM223	BOL - D45mm matt black+beach wood knob	11,446	25
0489045NM2M1	BOL - D45mm matt black+matt white lacquered knob	11,446	25

0494 LAND

Article	Description	Price EUR	Units/Box
0494040Z28	LAND - 40x33mm brushed gold knob	6,790	25
0494040Z610	LAND - 40x33mm pewter knob	5,581	25
0494040Z614	LAND - 40x33mm antique brass knob	5,864	25
0494040ZM2	LAND - 40x33mm matt black knob	5,299	25
0494064Z28	LAND - CC64L98mm brushed gold cup pull	9,671	25
0494064Z610	LAND - CC64L98mm pewter cup pull	7,073	25
0494064Z614	LAND - CC64L98mm antique brass cup pull	7,330	25
0494064ZM2	LAND - CC64L98mm matt black cup pull	6,970	25

0495 FLOID

Article	Description	Price EUR	Units/Box
0495035Z28	FLOID - 35x30mm brushed gold knob	5,684	25
0495035Z610	FLOID - 35x30mm pewter knob	5,041	25
0495035Z614	FLOID - 35x30mm antique brass knob	5,401	25
0495035ZM2	FLOID - 35x30mm matt black knob	4,398	25
0495128Z28	FLOID - CC128L144mm brushed gold handle	8,514	25
0495128Z610	FLOID - CC128L144mm pewter handle	7,330	25
0495128Z614	FLOID - CC128L144mm antique brass handle	7,793	25
0495128ZM2	FLOID - CC128L144mm matt black handle	6,585	25
0495192Z28	FLOID - CC192L208mm brushed gold handle	11,086	25
0495192Z610	FLOID - CC192L208mm pewter handle	9,337	25
0495192Z614	FLOID - CC192L208mm antique brass handle	9,800	25
0495192ZM2	FLOID - CC192L208mm matt black handle	8,256	25

0496 BAU

Article	Description	Price EUR	Units/Box
0496064Z23	BAU - CC64D90mm brushed nickel round pull	11,42	25
0496064Z28	BAU - CC64D90mm brushed gold round pull	13,272	25
0496064ZM2	BAU - CC64D90mm matt black round pull	9,568	25

0497 DIABOLO

Article	Description	Price EUR	Units/Box
0497014L24	DIABOLO - 14x31mm stainless steel look knob	4,553	25
0497014L291	DIABOLO - 14x31mm brushed brass knob	4,553	25
0497014L30	DIABOLO - 14x31mm brushed black knob	4,553	25
0497014L31	DIABOLO - 14x31mm brushed grey knob	4,553	25

0499 ROUND

Article	Description	Price EUR	Units/Box
0499025L24	ROUND - 25x28mm stainless steel look knob	4,938	25
0499025L291	ROUND - 25x28mm brushed brass knob	4,938	25
0499025L30	ROUND - 25x28mm brushed black knob	4,938	25

0506 FIRM

Article	Description	Price EUR	Units/Box
0506045ZM22	FIRM - 45x24mm textured black knob	10,748	25
0506064ZM22	FIRM - CC64L94mm textured black handle	11,729	25
0506093ZM22	FIRM - CC64L94mm textured black cup pull	14,051	25
0506096ZM22	FIRM - CC96L126mm textured black handle	12,500	25
0506160ZM22	FIRM - CC160L190mm textured black handle	14,172	25
0506320ZM22	FIRM - CC320L350mm textured black handle	19,111	25

0507 OBLONG

Article	Description	Price EUR	Units/Box
0507070P2601	OBLONG - 22x70mm beige leather+chrome hdle	13,452	25
0507070P2628	OBLONG - 22x70mm beige leather+brush gold hdle	13,452	25
0507070P2631	OBLONG - 22x70mm beige leather+brush grey hdle	13,452	25
0507070P26M1	OBLONG - 22x70mm beige leather+matt white hdle	13,452	25
0507070P26M2	OBLONG - 22x70mm beige leather+matt black hdle	13,452	25
0507070P3601	OBLONG - 22x70mm brown leather+chrome hdle	13,452	25
0507070P3628	OBLONG - 22x70mm brown leather+brush gold hdle	13,452	25
0507070P3631	OBLONG - 22x70mm brown leather+brush grey hdle	13,452	25
0507070P36M2	OBLONG - 22x70mm brown leather+matt black hdle	13,452	25
0507070P9901	OBLONG - 22x70mm black leather+chrome hdle	13,452	25
0507070P9928	OBLONG - 22x70mm black leather+brush gold hdle	13,452	25
0507070P9931	OBLONG - 22x70mm black leather+brushed grey hdle	13,452	25
0507070P99M2	OBLONG - 22x70mm black leather+matt black hdle	13,452	25
0507160P2601	OBLONG - 22x197mm beige leather+chrome hdle	25,901	25
0507160P2628	OBLONG - 22x197mm beige leather+brush gold hdle	25,901	25
0507160P2631	OBLONG - 22x197mm beige leather+brush grey hdle	25,901	25
0507160P26M1	OBLONG - 22x197mm beige leather+matt white hdle	25,901	25
0507160P26M2	OBLONG - 22x197mm beige leather+matt black hdle	25,901	25
0507160P3601	OBLONG - 22x197mm brown leather+chrome hdle	25,901	25
0507160P3628	OBLONG - 22x197mm brown leather+brush gold hdle	25,901	25
0507160P3631	OBLONG - 22x197mm brown leather+brush grey hdle	25,901	25
0507160P36M2	OBLONG - 22x197mm brown leather+matt black hdle	25,901	25
0507160P9901	OBLONG - 22x197mm black leather+chrome hdle	25,901	25
0507160P9928	OBLONG - 22x197mm black leather+brush gold hdle	25,901	25
0507160P9931	OBLONG - 22x197mm black leather+brush grey hdle	25,901	25
0507160P99M2	OBLONG - 22x197mm black leather+matt black hdle	25,901	25

0511 RAIL

Article	Description	Price EUR	Units/Box
05111120L24	RAIL - CC192-1120L1150 stainless steel lk hdl LEFT	88,351	15
05111120L24R	RAIL-CC192-1120L1150 stainless steel lk hdl RIGHT	88,351	15
05111120L30	RAIL - CC192-1120L1150 brushed black hdl LEFT	88,351	15
05111120L30R	RAIL - CC192-1120L1150 brushed black hdl RIGHT	88,351	15
05111120L618	RAIL- CC192-1120L1150 brush brass cava hdl LEFT	88,351	15
05111120L618R	RAIL-CC192-1120L1150 brsh brass cava hdl RIGHT	88,351	15
0511160L24	RAIL - CC160L180 stainless steel look handle	14,532	25
0511160L30	RAIL - CC160L180 brushed black handle	14,532	25
0511160L618	RAIL - CC160L180 brushed brass cava handle	14,532	25
0511192L24	RAIL - CC192L280 stainless steel look handle	25,669	25
0511192L30	RAIL - CC192L280 brushed black handle	25,669	25
0511192L618	RAIL - CC192L280 brushed brass cava handle	25,669	25
0511576L24	RAIL - CC192-576L600 stainless steel look handle	50,181	15
0511576L30	RAIL - CC192-576L600 brushed black handle	50,181	15
0511576L618	RAIL - CC192-576L600 brushed brass cava handle	50,181	15

0516 PENDANT

Article	Description	Price EUR	Units/Box
0516040Z610	PENDANT - 40x35mm pewter handle	7,330	25
0516040Z614	PENDANT - 40x35mm antique brass handle	7,793	25
0516040ZM2	PENDANT - 40x35mm matt black handle	7,253	25
0516128Z610	PENDANT - CC128L138 pewter handle	8,822	25
0516128Z614	PENDANT - CC128L138 antique brass handle	9,182	25
0516128ZM2	PENDANT - CC128L138 matt black handle	8,822	25

0518 WAY

Article	Description	Price EUR	Units/Box
0518032L04	WAY - CC32L50 anodized matt profile handle	3,601	25
0518032L09	WAY - CC32L50 matt black profile handle	3,704	25
0518032L24	WAY - CC32L50 stainless steel look profile hdle	3,884	25
0518032L29	WAY - CC32L50 brushed dark brass profile hdle	3,987	25
0518032LM1	WAY - CC32L50 matt white profile handle	4,064	25
0518064L04	WAY - CC64L100 anodized matt profile handle	4,321	25
0518064L09	WAY - CC64L100 matt black profile handle	4,501	25
0518064L24	WAY - CC64L100 stainless steel look profile handle	4,861	25
0518064L29	WAY - CC64L100 brushed dark brass profile handle	5,016	25
0518064LM1	WAY - CC64L100 matt white profile handle	5,016	25
05181056L04	WAY - CC1056L1100 anodized matt profile handle	25,669	15
05181056L09	WAY - CC1056L1100 matt black profile handle	26,827	15
05181056L24	WAY - CC1056L1100 stainless steel look profile handle	28,370	15
05181056L29	WAY - CC1056L1100 brushed dark brass profile handle	29,168	15
05181056LM1	WAY - CC1056L1100 matt white profile handle	31,971	15
0518128L04	WAY - CC128L200 anodized matt profile handle	6,122	25
0518128L09	WAY - CC128L200 matt black profile handle	6,482	25
0518128L24	WAY - CC128L200 stainless steel look profile hdle	6,842	25
0518128L29	WAY - CC128L200 brushed dark brass profile hdle	7,048	25
0518128LM1	WAY - CC128L200 matt white profile handle	7,125	25
0518320L04	WAY - CC320L400 anodized matt profile handle	10,263	25
0518320L09	WAY - CC320L400 matt black profile handle	10,906	25
0518320L24	WAY - CC320L400 stainless steel look profile handle	11,626	25
0518320L29	WAY - CC320L400 brushed dark brass profile handle	11,960	25
0518320LM1	WAY - CC320L400 matt white profile handle	12,243	25
0518736L04	WAY - CC736L800 anodized matt profile handle	19,805	25
0518736L09	WAY - CC736L800 matt black profile handle	20,628	25
0518736L24	WAY - CC736L800 stainless steel look profile handle	22,146	25
0518736L29	WAY - CC736L800 brushed dark brass profile handle	22,789	25
0518736LM1	WAY - CC736L800 matt white profile handle	24,306	25

0528 RILLE

Article	Description	Price EUR	Units/Box
0528055L24	RILLE - 55x38mm stainless steel look T knob	11,117	25
0528055L291	RILLE - 55x38mm brushed brass T knob	11,117	25
0528055L30	RILLE - 55x38mm brushed black T knob	11,117	25
0528160L24	RILLE-CC160L190mm stainless steel look handle	23,166	25
0528160L291	RILLE-CC160L190mm brushed brass handle	23,166	25
0528160L30	RILLE-CC160L190mm brushed black handle	23,166	25
0528320L24	RILLE-CC320L350mm stainless steel look handle	30,609	25
0528320L291	RILLE-CC320L350mm brushed brass handle	30,609	25
0528320L30	RILLE-CC320L350mm brushed black handle	30,609	25
0528480L24	RILLE-CC480L510mm stainless steel look handle	38,613	25
0528480L291	RILLE-CC480L510mm brushed brass handle	38,613	25
0528480L30	RILLE-CC480L510mm brushed black handle	38,613	25
0528992L24	RILLE-CC992L1022mm stainless steel look hdle	76,480	15
0528992L291	RILLE-CC992L1022mm brushed brass hdle	76,480	15
0528992L30	RILLE-CC992L1022mm brushed black handle	76,480	15

0530 DISC



Article	Description	Price EUR	Units/Box
0530038W16	DISC - D38 oak wood knob	8,282	25
0530038W17	DISC - D38 walnut wood knob	10,162	25
0530038WM2	DISC - D38mm ash matt black lacquered knob	8,794	25
0530038Z23	DISC - D38mm brushed nickel knob	6,161	25
0530038Z618	DISC - D38mm brushed brass cava knob	7,153	25
0530038ZM1	DISC - D38mm matt white knob	5,254	25
0530038ZM2	DISC - D38mm matt black knob	4,905	25
0530050W16	DISC - D50mm oak wood knob	11,444	25
0530050W17	DISC - D50mm walnut wood knob	15,715	25
0530050WM2	DISC - D50mm ash matt black lacquered knob	11,956	25
0530050Z23	DISC - D50mm brushed nickel knob	10,708	25
0530050Z618	DISC - D50mm brushed brass cava knob	12,496	25
0530050ZM1	DISC - D50mm matt white knob	9,235	25
0530050ZM2	DISC - D50mm matt black knob	8,657	25

0536 LUV



Article	Description	Price EUR	Units/Box
0536017Z23	LUV - 17x51mm brushed nickel knob	10,793	25
0536017Z618	LUV - 17x51mm brushed brass cava knob	12,353	25
0536017ZM1	LUV - 17x51mm matt white knob	9,060	25
0536017ZM2	LUV - 17x51mm matt black knob	8,516	25
0536192Z23	LUV - CC192L202mm brushed nickel handle	21,771	25
0536192Z618	LUV - CC192L202mm brushed brass cava handle	25,068	25
0536192ZM1	LUV - CC192L202mm matt white handle	18,390	25
0536192ZM2	LUV - CC192L202mm matt black handle	17,295	25
0536320Z23	LUV - CC320L330mm brushed nickel handle	28,178	25
0536320Z618	LUV - CC320L330mm brushed brass cava handle	32,209	25
0536320ZM1	LUV - CC320L330mm matt white handle	23,973	25
0536320ZM2	LUV - CC320L330mm matt black handle	22,508	25

0538 CONIC



Article	Description	Price EUR	Units/Box
0538029W16	CONIC - D29mm oak wood knob	7,677	25
0538029W17	CONIC - D29mm walnut wood knob	9,060	25
0538029WM2	CONIC - D29mm ash matt black lacquered knob	8,197	25
0538029ZM1	CONIC - D29mm matt white knob	5,125	25
0538029ZM2	CONIC - D29mm matt black knob	4,688	25
0538029ZM25	CONIC - D29mm moss grey knob	5,030	25
0538043W16	CONIC - D43mm oak wood knob	11,044	25
0538043W17	CONIC - D43mm walnut wood knob	14,499	25
0538043WM2	CONIC - D43mm ash matt black lacquered knob	11,907	25
0538043ZM1	CONIC - D43mm matt white knob	9,330	25
0538043ZM2	CONIC - D43mm matt black knob	8,021	25
0538043ZM25	CONIC - D43mm moss grey knob	8,606	25

0542 FOLD

Article	Description	Price EUR	Units/Box
0542128Z23	FOLD-CC128L174mm brush nickel recess hdle	23,061	25
0542128Z618	FOLD-CC128L174mm brush brass cava recess hdle	26,443	25
0542128ZM1	FOLD-CC128L174mm matt white recess hdle	19,399	25
0542128ZM2	FOLD-CC128L174mm matt black recess hdle	18,119	25

0543 SOFT

Article	Description	Price EUR	Units/Box
0543032ZM1	SOFT - CC32L40mm matt white handle	6,790	25
0543032ZM2	SOFT - CC32L40mm matt black handle	6,790	25
0543032ZM25	SOFT - CC32L40mm moss grey handle	6,970	25
0543192ZM1	SOFT - CC192L200mm matt white handle	12,044	25
0543192ZM2	SOFT - CC192L200mm matt black handle	11,317	25
0543192ZM25	SOFT - CC192L200mm moss grey handle	12,312	25
0543320ZM1	SOFT - CC320L328mm matt white handle	17,836	25
0543320ZM2	SOFT - CC320L328mm matt black handle	16,934	25
0543320ZM25	SOFT - CC320L328mm moss grey handle	18,287	25

0552 RIM

Article	Description	Price EUR	Units/Box
0552096Z23	RIM - CC96L120mm brushed nickel handle	13,031	25
0552096Z618	RIM - CC96L120mm brushed brass cava handle	15,123	25
0552096ZM1	RIM - CC96L120mm matt white handle	11,229	25
0552096ZM2	RIM - CC96L120mm matt black handle	10,442	25
0552096ZM25	RIM - CC96L120mm moss grey handle	11,680	25

0553 OTO

Article	Description	Price EUR	Units/Box
0553060ZM22	OTO - 60x37mm textured black T knob	11,819	25
0553128ZM22	OTO - CC128L168mm textured black handle	17,527	25

0556 DIPO

Article	Description	Price EUR	Units/Box
0556070ZM1	DIPO - D70mm matt white recessed pull	12,675	25
0556070ZM2	DIPO - D70mm matt black recessed pull	12,675	25
0556070ZM25	DIPO - D70mm moss grey recessed pull	12,675	25

0583 ARPA

Article	Description	Price EUR	Units/Box
0583022L24	ARPA - Diam22mm stainless steel look knob	7,454	25
0583022L291	ARPA - Diam22mm brushed brass knob	7,454	25
0583022L30	ARPA - Diam22mm brushed black knob	7,454	25
0583022L623	ARPA - Diam22mm rustic brass knob	9,754	25
0583070L24	ARPA - 70x37mm stainless steel look T knob	11,117	25
0583070L291	ARPA - 70x37mm brushed brass T knob	11,117	25
0583070L30	ARPA - 70x37mm brushed black T knob	11,117	25
0583070L623	ARPA - 70x37mm rustic brass T knob	12,977	25
05831178L24	ARPA - CC1178L1200mm stainless st look handle	74,639	10
05831178L291	ARPA - CC1178L1200mm brushed brass handle	74,639	10
05831178L30	ARPA - CC1178L1200mm brushed black handle	74,639	10
0583192L24	ARPA - CC192L214mm stainless st look handle	22,071	25
0583192L291	ARPA - CC192L214mm brushed brass handle	22,071	25
0583192L30	ARPA - CC192L214mm brushed black handle	22,071	25
0583192L623	ARPA - CC192L214mm rustic brass handle	27,697	25
0583320L24	ARPA - CC320L340mm stainless st look handle	27,228	25
0583320L291	ARPA - CC320L340mm brushed brass handle	27,228	25
0583320L30	ARPA - CC320L340mm brushed black handle	27,228	25

0584 MIIG

Article	Description	Price EUR	Units/Box
0584160Z23	MIIG - CC160L168mm brushed nickel pull	13,740	25
0584160Z618	MIIG - CC160L168mm brushed brass cava pull	16,489	25
0584160ZM1	MIIG - CC160L168mm matt white pull	11,240	25
0584160ZM2	MIIG - CC160L168mm matt black pull	10,946	25
0584160ZM41	MIIG - CC160L168mm metallic brown pull	11,176	25

0588 ARPA PLATE

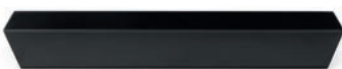
Article	Description	Price EUR	Units/Box
0588022L24	ARPA plate - Diam22mm stainless steel look knob	10,828	25
0588022L291	ARPA plate - Diam22mm brushed brass knob	10,828	25
0588022L30	ARPA plate - Diam22mm brushed black knob	10,828	25
0588022L623	ARPA plate - Diam22mm rustic brass knob	14,720	25
0588070L24	ARPA plate - 70x25mm stainless steel look T knob	13,938	25
0588070L291	ARPA plate - 70x25mm brushed brass T knob	13,938	25
0588070L30	ARPA plate - 70x25mm brushed black T knob	13,938	25
0588070L623	ARPA plate - 70x25mm rustic brass T knob	16,199	25
05881178L24	ARPA plate - CC1178L1216mm stainless st look handle	102,574	10
05881178L291	ARPA plate- CC1178L1216mm brush brass handle	102,574	10
05881178L30	ARPA plate - CC1178L1216mm brushed black handle	102,574	10
0588192L24	ARPA plate- CC192L230mm stainless st look handle	27,698	25
0588192L291	ARPA plate - CC192L230mm brush brass handle	27,698	25
0588192L30	ARPA plate - CC192L230mm brushed black handle	27,698	25
0588192L623	ARPA plate - CC192L230mm rustic brass handle	37,626	25
0588320L24	ARPA plate - CC320L358mm stainless st look handle	35,570	25
0588320L291	ARPA plate - CC320L358mm brush brass handle	35,570	25
0588320L30	ARPA plate - CC320L358mm brushed black handle	35,570	25

0590 BELT

Article	Description	Price EUR	Units/Box
0590022ZM1	BELT - 22x63mm matt white knob	8,825	25
0590022ZM2	BELT - 22x63mm matt black knob	8,825	25
0590022ZM25	BELT - 22x63mm moss grey knob	8,825	25
0590022ZM31	BELT - 22x63mm forest green knob	8,825	25
0590022ZM43	BELT - 22x63mm mocca brown knob	8,825	25
0590022ZM72	BELT - 22x63mm volcano red knob	8,825	25
0590160ZM1	BELT - CC160L221mm matt white pull	15,750	25
0590160ZM2	BELT - CC160L221mm matt black pull	15,750	25
0590160ZM25	BELT - CC160L221mm moss grey pull	15,750	25
0590160ZM31	BELT - CC160L221mm forest green pull	15,750	25
0590160ZM43	BELT - CC160L221mm mocca brown pull	15,750	25
0590160ZM72	BELT - CC160L221mm volcano red pull	15,750	25

0591 ETO

Article	Description	Price EUR	Units/Box
0591160NM2716	ETO - CC160L174mm oak wood + grey lava pull	25,767	25
0591160NM2717	ETO - CC160L174mm walnut wood + grey lava pull	30,165	25
0591160NM2M2	ETO - CC160L174mm black wood + black pull	26,105	25
0591320NM2716	ETO - CC320L334mm oak wood + grey lava pull	35,938	25
0591320NM2717	ETO - CC320L334mm walnut wood + grey lava pull	45,915	25
0591320NM2M2	ETO - CC320L334mm ash matt black lac. + black pull	37,628	25
0591992NM2716	ETO - CC992L1006mm oak wood + grey lava pull	74,260	15
0591992NM2717	ETO - CC992L1006mm walnut wood + grey lava pull	104,441	15
0591992NM2M2	ETO - CC992L1006mm ash matt black lac. + black pull	75,106	15

0597 PLIÉ

Article	Description	Price EUR	Units/Box
0597064ZM2	PLIÉ - CC64L114mm matt black pull	9,398	25
0597064ZM23	PLIÉ - CC64L114mm metallic grey pull	9,508	25
0597064ZM41	PLIÉ - CC64L114mm metallic brown pull	9,508	25
0597160ZM2	PLIÉ - CC160L210mm matt black pull	15,934	25
0597160ZM23	PLIÉ - CC160L210mm metallic grey pull	16,066	25
0597160ZM41	PLIÉ - CC160L210mm metallic brown pull	16,066	25

0600 WING

Article	Description	Price EUR	Units/Box
0600064L24	WING - CC64L100mm stainless steel look pull	6,596	25
0600064L30	WING - CC64L100mm brushed black pull	6,596	25
0600064L613	WING - CC64L100mm antique bronze pull	6,596	25
0600064L618	WING - CC64L100mm brushed brass cava pull	6,596	25
06001120L24	WING - CC1120L1200mm stainless steel look pull	37,557	15
06001120L30	WING - CC1120L1200mm brushed black pull	37,557	15
06001120L613	WING - CC1120L1200mm antique bronze pull	37,557	15
06001120L618	WING - CC1120L1200mm brushed brass cava pull	37,557	15
0600128L24	WING - CC128L200mm stainless steel look pull	8,243	25
0600128L30	WING - CC128L200mm brushed black pull	8,243	25
0600128L613	WING - CC128L200mm antique bronze pull	8,243	25
0600128L618	WING - CC128L200mm brushed brass cava pull	8,243	25
0600256L24	WING - CC256L350mm stainless steel look pull	14,932	25
0600256L30	WING - CC256L350mm brushed black look pull	14,932	25
0600256L613	WING - CC256L350mm antique bronze look pull	14,932	25
0600256L618	WING - CC256L350mm brushed brass cava pull	14,932	25

0601 OH

Article	Description	Price EUR	Units/Box
0601040W16	OH! - 40mm oak wood knob	12,503	25
0601040W17	OH! - 40mm walnut wood knob	15,665	25
0601040WM2	OH! - 40mm ash matt black lacquered knob	13,213	25
0601040Z23	OH! - 40mm brushed nickel knob	12,091	25
0601040Z618	OH! - 40mm brushed brass cava knob	13,098	25
0601040ZM2	OH! - 40mm matt black knob	10,900	25

0602 VALLEY

Article	Description	Price EUR	Units/Box
0602160Z03	VALLEY - CC160L223mm polished black nickel pull	16,397	25
0602160Z07	VALLEY - CC160L223mm polished brass pull	16,397	25
0602160Z618	VALLEY - CC160L223mm brushed brass cava pull	18,503	25
0602160ZM2	VALLEY - CC160L223mm matt black pull	13,740	25
0602256Z03	VALLEY - CC256L330mm polished black nickel pull	24,640	25
0602256Z07	VALLEY - CC256L330mm polished brass pull	24,640	25
0602256Z618	VALLEY - CC256L330mm brushed brass cava pull	28,030	25
0602256ZM2	VALLEY - CC256L330mm matt black pull	21,618	25

0603 LIPP

Article	Description	Price EUR	Units/Box
0603192Z618	LIPP - CC192L205mm brushed brass cava pull	20,337	25
0603192ZM2	LIPP - CC192L205mm matt black pull	15,755	25
0603320Z618	LIPP - CC320L333mm brushed brass cava pull	31,328	25
0603320ZM2	LIPP - CC320L333mm matt black pull	24,366	25

0604 PRISMA

Article	Description	Price EUR	Units/Box
0604078Z623	PRISMA - 78x41mm rustic brass T knob	13,191	25
0604078ZM2	PRISMA - 78x41mm matt black T knob	11,907	25
0604192Z623	PRISMA - CC192L272mm rustic brass pull	34,166	15
0604192ZM2	PRISMA - CC192L272mm matt black pull	32,060	15

0608 QUART MINI

Article	Description	Price EUR	Units/Box
0608026Z618	QUART MINI - 26x26mm brushed brass cava knob	6,962	25
0608026Z623	QUART MINI - 26x26mm rustic brass knob	6,320	25
0608026ZM2	QUART MINI - 26x26mm matt black knob	5,679	25
0608128Z618	QUART MINI - CC128L146mm brush brass cava pull	12,549	25
0608128Z623	QUART MINI - CC128L146mm rustic brass pull	10,626	25
0608128ZM2	QUART MINI - CC128L146mm matt black pull	10,076	25

0610 FLAPP

Article	Description	Price EUR	Units/Box
0610032L24	FLAPP - CC32L70mm stainless steel look pull	8,611	25
0610032L30	FLAPP - CC32L70mm brushed black pull	8,611	25
0610032L618	FLAPP - CC32L70mm brushed brass cava pull	8,611	25
06101056L24	FLAPP - CC1056L1100mm stainless steel look pull	46,534	15
06101056L30	FLAPP - CC1056L1100mm brushed black pull	46,534	15
06101056L618	FLAPP - CC1056L1100mm brushed brass cava pull	46,534	15
0610160L24	FLAPP - CC128-160L200mm stainless steel look pull	15,573	25
0610160L30	FLAPP - CC128-160L200mm brushed black pull	15,573	25
0610160L618	FLAPP - CC128-160L200mm brushed brass cava pull	15,573	25
0610256L24	FLAPP - CC256L350mm stainless steel look pull	22,259	25
0610256L30	FLAPP - CC256L350mm brushed black pull	22,259	25
0610256L618	FLAPP - CC256L350mm brushed brass cava pull	22,259	25

0613 FLAPP WOOD

Article	Description	Price EUR	Units/Box
0613032W00	FLAPP - CC32L70mm RAW oak wood pull	13,857	25
0613032W16	FLAPP - CC32L70mm oak wood pull	15,139	25
0613032W17	FLAPP - CC32L70mm walnut wood pull	19,571	25
06131056W00	FLAPP - CC1056L1100mm RAW oak wood pull	113,287	15
06131056W16	FLAPP - CC1056L1100mm oak wood pull	126,592	15
06131056W17	FLAPP - CC1056L1100mm walnut wood pull	166,946	15
0613160W00	FLAPP - CC128-160L200mm RAW oak wood pull	24,447	25
0613160W16	FLAPP - CC128-160L200mm oak wood pull	25,726	25
0613160W17	FLAPP - CC128-160L200mm walnut wood pull	36,984	25

0614 EQUIS

Article	Description	Price EUR	Units/Box
0614040Z01	EQUIS - 40x40mm polished chrome knob	7,236	25
0614040Z03	EQUIS - 40x40mm polished black nickle knob	7,512	25
0614040Z06	EQUIS - 40x40mm polished copper knob	7,512	25
0614040Z07	EQUIS - 40x40mm polished brass knob	7,512	25
0614040ZM1	EQUIS - 40x40mm matt white knob	6,778	25
0614040ZM2	EQUIS - 40x40mm matt black knob	6,412	25

0616 QUART BIG

Article	Description	Price EUR	Units/Box
0616034Z618	QUART BIG - 34x34mm brushed brass cava knob	8,703	25
0616034Z623	QUART BIG - 34x34mm rustic brass knob	8,335	25
0616034ZM2	QUART BIG - 34x34mm matt black knob	7,694	25
0616160Z618	QUART BIG - CC160L183mm brush brass cava pull	17,312	25
0616160Z623	QUART BIG - CC160L183mm rustic brass pull	15,205	25
0616160ZM2	QUART BIG - CC160L183mm matt black pull	14,290	25

0621 RILLE MINI

Article	Description	Price EUR	Units/Box
0621055L05	RILLE MINI - 55x34mm polished nickel T Knob	11,724	25
0621055L24	RILLE MINI - 55x34mm stainless steel look T Knob	10,334	25
0621055L291	RILLE MINI - 55x34mm brushed brass T Knob	10,334	25
0621055L30	RILLE MINI - 55x34mm brushed black T Knob	10,334	25
0621160L05	RILLE MINI - CC160L190mm polished nickel pull	19,974	25
0621160L24	RILLE MINI - CC160L190mm stainless steel look pull	16,239	25
0621160L291	RILLE MINI - CC160L190mm brushed brass pull	16,239	25
0621160L30	RILLE MINI - CC160L190mm brushed black pull	16,239	25
0621320L05	RILLE MINI - CC320L350mm polished nickel pull	25,271	25
0621320L24	RILLE MINI - CC320L350mm stainless steel look pull	19,974	25
0621320L291	RILLE MINI - CC320L350mm brushed brass pull	19,974	25
0621320L30	RILLE MINI - CC320L350mm brushed black pull	19,974	25

0627 FUSION

Article	Description	Price EUR	Units/Box
0627058Z03	FUSION - 58x31.5mm polished titanium black T knob	13,084	25
0627058Z05	FUSION - 58x31.5mm polished nickel T knob	13,699	25
0627058Z07	FUSION - 58x31.5mm polished brass T knob	13,084	25
0627058Z33	FUSION - 58x31.5mm titanium black T knob	13,084	25
0627058Z618	FUSION - 58x31.5mm brushed brass cava T knob	13,084	25
0627058ZM2	FUSION - 58x31.5mm matt black T knob	11,240	25
0627160Z03	FUSION - CC160L180mm polished titanium black pull	26,607	25
0627160Z05	FUSION - CC160L180mm polished nickel pull	29,066	25
0627160Z07	FUSION - CC160L180mm polished brass pull	26,607	25
0627160Z33	FUSION - CC160L180mm titanium black pull	26,607	25
0627160Z618	FUSION - CC160L180mm brushed brass cava pull	26,607	25
0627160ZM2	FUSION - CC160L180mm matt black pull	20,987	25
0627320Z03	FUSION - CC320L340mm polished titanium black pull	37,145	25
0627320Z05	FUSION - CC320L340mm polished nickel pull	40,570	25
0627320Z07	FUSION - CC320L340mm polished brass pull	37,145	25
0627320Z33	FUSION - CC320L340mm titanium black pull	37,145	25
0627320Z618	FUSION - CC320L340mm brushed brass cava pull	37,145	25
0627320ZM2	FUSION - CC320L340mm matt black pull	31,437	25

0629 / 0662 / 0663 MOON

Article	Description	Price EUR	Units/Box
06291056L24	MOON - CC1056L1096mm stainless steel look pull	120,34	2
06291056L30	MOON - CC1056L1096mm brushed black pull	119,12	2
06291056L618	MOON - CC1056L1096mm brushed brass cava pull	129,45	2
0629384L24	MOON - CC384L424mm stainless steel look pull	58,93	2
0629384L30	MOON - CC384L424mm brushed black pull	58,09	2
0629384L618	MOON - CC384L424mm brushed brass cava pull	63,21	2
06621056L24	MOON - Stainless st look pull handle(one side) CC1056L1096mm	148,54	2
06621056L30	MOON - Brushed black pull handle(one side) CC1056L1096mm	147,33	2
06621056L618	MOON - Brushed brass cava pull handle(onde side) CC1056L1096mm	159,41	2
0662384L24	MOON - Stainless steel look pull handle(one side) CC384L424mm	78,2	2
0662384L30	MOON - Brushed black pull handle(one side) CC384L424mm	77,36	2
0662384L618	MOON - Brushed brass cava pull handle(one side) CC384L424mm	83,69	2
06631056L24	MOON - SS look pull handle(backtoback) CC1056L1096mm	284,444	1
06631056L30	MOON - Brushed black pull handle (backtoback) CC1056L1096mm	262,880	1
06631056L618	MOON - Brushed brass cava pull hdl (backtoback) CC1056L1096mm	296,698	1
0663384L24	MOON - SS look pull handle(backtoback) CC384L424mm	140,745	1
0663384L30	MOON - Brushed black pull handle(backtoback) CC384L424mm	129,941	1
0663384L618	MOON - Brushed brass cava pull hdl(backtoback) CC384L424mm	147,226	1

0635 LIDD

Article	Description	Price EUR	Units/Box
0635048Z23	LIDD - CC48L64mm brushed nickel recessed pull	15,631	25
0635048Z33	LIDD - CC48L64mm titanium black recessed pull	15,631	25
0635048Z618	LIDD - CC48L64mm brushed brass cava recessed pull	15,982	25
0635048ZM1	LIDD - CC48L64mm matt white recessed pull	14,313	25
0635048ZM2	LIDD - CC48L64mm matt black recessed pull	13,348	25

0636 POINT

Article	Description	Price EUR	Units/Box
0636040L30	POINT - 40x29mm brushed black knob	13,035	25
0636040L33	POINT - 40x29mm titanium black knob	13,235	25
0636040L618	POINT - 40x29mm brushed brass cava knob	13,235	25
0636110L30	POINT - 110x41mm brushed black T knob	13,634	25
0636110L33	POINT - 110x41mm titanium black T knob	13,869	25
0636110L618	POINT - 110x41mm brushed brass cava T knob	13,869	25
0636192L30	POINT - CC192L228mm brushed black pull	23,334	25
0636192L33	POINT - CC192L228mm titanium black pull	23,725	25
0636192L618	POINT - CC192L228mm brushed brass cava pull	23,725	25
0636320L30	POINT - CC320L356mm brushed black pull	30,151	25
0636320L33	POINT - CC320L356mm titanium black pull	30,612	25
0636320L618	POINT - CC320L356mm brushed brass cava pull	30,612	25
0636960L30	POINT - CC960L996mm brushed black pull	71,41	10
0636960L33	POINT - CC960L996mm titanium black pull	73,598	10
0636960L618	POINT - CC960L996mm brushed brass cava pull	73,598	10

0638 PRISM

Article	Description	Price EUR	Units/Box
0638032Z03	PRISM - 32x28mm polished titanium black knob	7,729	25
0638032Z05	PRISM - 32x28mm polished nickel knob	9,987	25
0638032Z07	PRISM - 32x28mm polished brass knob	7,729	25
0638032Z33	PRISM - 32x28mm titanium black knob	7,729	25
0638032Z618	PRISM - 32x28mm brushed brass cava knob	7,729	25
0638032ZM1	PRISM - 32x28mm matt white knob	6,774	25
0638032ZM2	PRISM - 32x28mm matt black knob	6,426	25

0643 LINKK

Article	Description	Price EUR	Units/Box
06431056L24	LINKK - CC1056L1071mm Stainless steel look pull	56,1	10
06431056L291	LINKK - CC1056L1071mm brushed brass pull	56,1	10
06431056L30	LINKK - CC1056L1071mm brushed black pull	56,1	10
0643160L24	LINKK - CC160L175mm Stainless steel look pull	19,974	25
0643160L291	LINKK - CC160L175mm brushed brass pull	19,974	25
0643160L30	LINKK - CC160L175mm brushed black pull	19,974	25
0643320L24	LINKK - CC320L335mm Stainless steel look pull	24,663	25
0643320L291	LINKK - CC320L335mm brushed brass pull	24,663	25
0643320L30	LINKK - CC320L335mm brushed black pull	24,663	25

0645 RISS MINI

Article	Description	Price EUR	Units/Box
0645192LM1	RISS MINI - CC192L207mm matt white pull	15,718	25
0645192LM2	RISS MINI - CC192L207mm matt black pull	15,279	25
0645192LM25	RISS MINI - CC192L207mm moss grey pull	15,279	25
0645192LM31	RISS MINI - CC192L207mm forest green pull	15,279	25
0645192LM43	RISS MINI - CC192L207mm mocca brown pull	15,279	25
0645192LM72	RISS MINI - CC192L207mm volcano red pull	15,279	25
0645192LM82	RISS MINI - CC192L207mm midnight blue pull	15,279	25
0645320LM1	RISS MINI - CC320L335mm matt white pull	19,319	25
0645320LM2	RISS MINI - CC320L335mm matt black pull	18,88	25
0645320LM25	RISS MINI - CC320L335mm moss grey pull	18,88	25
0645320LM31	RISS MINI - CC320L335mm forest green pull	18,88	25
0645320LM43	RISS MINI - CC320L335mm mocca brown pull	18,88	25
0645320LM72	RISS MINI - CC320L335mm volcano red pull	18,88	25
0645320LM82	RISS MINI - CC320L335mm midnight blue pull	18,88	25

0648 OMEGA

Artículo	Descripción	Precio EUR	U/Caja
0648032Z618	OMEGA - CC32L62.5mm brushed brass cava knob	9,572	25
0648032Z623	OMEGA - CC32L62.5mm rustic brass knob	7,938	25
0648032ZM2	OMEGA - CC32L62.5mm matt black knob	7,043	25
0648160Z618	OMEGA - CC160L190.5mm brushed brass cava pull	21,075	25
0648160Z623	OMEGA - CC160L190.5mm rustic brass pull	18,23	25
0648160ZM2	OMEGA - CC160L190.5mm matt black pull	15,631	25

0650 MOULE

Article	Description	Price EUR	Units/Box
0650128Z33	MOULE - CC128L154mm titanium black recessed pull	25,817	25
0650128Z618	MOULE - CC128L154mm brushed brass cava recessed pull	25,817	25
0650128ZM1	MOULE - CC128L154mm matt white recessed pull	21,865	25
0650128ZM2	MOULE - CC128L154mm matt black recessed pull	20,899	25

0655 RISS BIG

Article	Description	Price EUR	Units/Box
0655480LM1	RISS BIG - CC480L500mm matt white pull	35,863	15
0655480LM2	RISS BIG - CC480L500mm matt black pull	33,843	15
0655480LM25	RISS BIG - CC480L500mm moss grey pull	33,843	15
0655480LM31	RISS BIG - CC480L500mm forest green pull	33,843	15
0655480LM43	RISS BIG - CC480L500mm mocca brown pull	33,843	15
0655480LM72	RISS BIG - CC480L500mm volcano red pull	33,843	15
0655480LM82	RISS BIG - CC480L500mm midnight blue pull	33,843	15
0655960LM1	RISS BIG - CC960L980mm matt white pull	52,336	10
0655960LM2	RISS BIG - CC960L980mm matt black pull	51,458	10
0655960LM25	RISS BIG - CC960L980mm moss grey pull	51,458	10
0655960LM31	RISS BIG - CC960L980mm forest green pull	51,458	10
0655960LM43	RISS BIG - CC960L980mm mocca brown pull	51,458	10
0655960LM72	RISS BIG - CC960L980mm volcano red pull	51,458	10
0655960LM82	RISS BIG - CC960L980mm midnight blue pull	51,458	10

0657 NOBB

Article	Description	Price EUR	Units/Box
0657052L24	NOBB - 52x45mm stainless steel look T knob	10,927	25
0657052L30	NOBB - 52x45mm brushed black T knob	10,927	25
0657052L618	NOBB - 52x45mm brushed brass cava T knob	11,12	25
06571056L24	NOBB - CC1056L1108mm stainless steel look pull	59,963	10
06571056L30	NOBB - CC1056L1108mm brushed black look pull	58,853	10
06571056L618	NOBB - CC1056L1108mm brushed brass cava look pull	61,072	10
0657192L24	NOBB - CC192L244mm stainless steel look pull	24,543	25
0657192L30	NOBB - CC192L244mm brushed black pull	24,325	25
0657192L618	NOBB - CC192L244mm brushed brass cava pull	25,165	25
0657320L24	NOBB - CC320L372mm stainless steel look pull	29,712	25
0657320L30	NOBB - CC320L372mm brushed black pull	29,41	25
0657320L618	NOBB - CC320L372mm brushed brass cava pull	30,503	25

0658 DUO MINI



Article	Description	Price EUR	Units/Box
0658160NM2716	DUO MINI - Oak pull CC160L194,6mm	27,51	25
0658160NM2717	DUO MINI - Walnut pull CC160L194,6mm	31,54	25
0658160NM2M2	DUO MINI - Oak matt black lac pull CC160L194,6mm	29,77	25
0658320NM2716	DUO MINI - Oak pull CC320L354,6mm	35,4	25
0658320NM2717	DUO MINI - Walnut pull CC320L354,6mm	42,53	25
0658320NM2M2	DUO MINI - Oak matt black lac pull CC320L354,6mm	39,01	25

0659 / 0668 / 0670 DUO BIG



Article	Description	Price EUR	Units/Box
0659480NM2716	DUO BIG - Oak pull CC480L536mm	82,05	2
0659480NM2717	DUO BIG - Walnut pull CC480L536mm	102,73	2
0659480NM2M2	DUO BIG - Oak matt black lac pull CC480L536mm	89,18	2
0659960NM2716	DUO BIG - Oak pull CC960L1016mm	124,02	2
0659960NM2717	DUO BIG - Walnut pull CC960L1016mm	167,28	2
0659960NM2M2	DUO BIG - Oak matt black lac pull CC960L1016mm	131,72	2
0668480NM2716	DUO BIG - Oak pull handle(one side) CC480L536mm	99,01	2
0668480NM2717	DUO BIG - Walnut pull handle (one side) CC480L536mm	115,68	2
0668480NM2M2	DUO BIG - Matt black pull handle (one side) CC480L536mm	101,34	2
0668960NM2716	DUO BIG - Oak pull handle (one side) CC960L1016mm	149,11	2
0668960NM2717	DUO BIG - Walnut pull handle (one side) CC960L1016mm	187,13	2
0668960NM2M2	DUO BIG - Matt black pull handle (one side) CC960L1016mm	151,07	2
0670480NM2716	DUO BIG - Oak pull handle (backtoback) CC480L536mm	192,66	1
0670480NM2717	DUO BIG - Walnut pull handle (backtoback) CC480L536mm	213,25	1
0670480NM2M2	DUO BIG - Oak black pull handle (backtoback) CC480L536mm	199,82	1
0670960NM2716	DUO BIG - Oak pull handle (backtoback) CC960L1016mm	290,79	1
0670960NM2717	DUO BIG - Walnut pull handle (backtoback) CC960L1016mm	346	1
0670960NM2M2	DUO BIG - Matt black pull handle (backtoback) CC960L1016mm	295,04	1

0664 / 0665 / 0671 LUV WOOD



Article	Description	Price EUR	Units/Box
0664384W16	LUV WOOD - Oak handle CC384L418mm	88,938	2
0664384W17	LUV WOOD - Walnut handle CC384L418mm	121,315	2
0664384WM2	LUV WOOD - Oak matt black lacquered handle CC384L418mm	89,089	2
0664992W16	LUV WOOD - Oak handle CC992L1026mm	164,932	2
0664992W17	LUV WOOD - Walnut handle CC992L1026mm	251,492	2
0664992WM2	LUV WOOD - Oak matt black lacquered handle CC992L1026mm	164,104	2
0665384W16	LUV WOOD - Oak pull handle (one side) CC384L418mm	98,601	2
0665384W17	LUV WOOD - Walnut pull handle(one side) CC384L418mm	129,962	2
0665384WM2	LUV WOOD - Oak matt black lac pull handle(one side)CC384L418mm	98,244	2
0665992W16	LUV WOOD - Oak pull handle(one side) CC992L1026mm	178,859	2
0665992W17	LUV WOOD - Walnut pull handle(one side) CC992L1026mm	261,1	2
0665992WM2	LUV WOOD - Matt black pull handle(one side) CC992L1026mm	177,298	2
0671384W16	LUV WOOD - Oak door pull handle (backtoback) CC384L418mm	188,5	1
0671384W17	LUV WOOD - Walnut door pull handle(backtoback) CC384L418mm	252,14	1
0671384WM2	LUV WOOD - Matt black door pull hdl (backtoback) CC384L418mm	188,24	1
0671992W16	LUV WOOD - Oak door pull handle (backtoback) CC992L1026mm	345,528	1
0671992W17	LUV WOOD - Walnut door pull handle (backtoback) CC992L1026mm	514,15	1
0671992WM2	LUV WOOD - Matt black door pull hdl (backtoback) CC992L1026m	343,05	1

Wall hooks



7001 ZOOT



Article	Description	Price EUR	Units/Box
7001060N29116	ZOOT - Hook in brushed dark brass+oak D60mm	42,511	12
7001060N29116EI	ZOOT - Hook in brushed dark brass+oak D60mm	38,985	15
7001060N29117	ZOOT - Hook in brushed dark brass+walnut D60mm	45,066	12
7001060N29117EI	ZOOT - Hook in brushed dark brass+walnut D60mm	41,613	15
7001060N291M2	ZOOT - Hook in brush dark brass+black lacq D60mm	43,518	12
7001060N291M2EI	ZOOT - Hook in brush dark brass+black lacq D60mm	40,021	15
7001060NM216	ZOOT - Hook in matt black+oak D60mm	42,976	12
7001060NM216EI	ZOOT - Hook in matt black+oak D60mm	38,985	15
7001060NM217	ZOOT - Hook in matt black+walnut D60mm	45,531	12
7001060NM217EI	ZOOT - Hook in matt black+walnut D60mm	41,613	15
7001060NM2M2	ZOOT - Hook in matt black+black matt lacq D60mm	43,982	12
7001060NM2M2EI	ZOOT - Hook in matt black+black matt lacq D60mm	40,021	15
7001090N29116	ZOOT - Hook in brushed dark brass+oak D90mm	48,783	12
7001090N29116EI	ZOOT - Hook in brushed dark brass+oak D90mm	45,524	15
7001090N29117	ZOOT - Hook in brushed dark brass+walnut D90mm	53,584	12
7001090N29117EI	ZOOT - Hook in brushed dark brass+walnut D90mm	50,462	15
7001090N291M2	ZOOT - Hook in brush dark brass+black lacq D90mm	49,403	12
7001090N291M2EI	ZOOT - Hook in brush dark brass+black lacq D90mm	46,161	15
7001090NM216	ZOOT - Hook in matt black+oak D90mm	49,248	12
7001090NM216EI	ZOOT - Hook in matt black+oak D90mm	45,524	15
7001090NM217	ZOOT - Hook in matt black+walnut D90mm	54,049	12
7001090NM217EI	ZOOT - Hook in matt black+walnut D90mm	50,462	15
7001090NM2M2	ZOOT - Hook in matt black+black matt lacq D90mm	49,867	12
7001090NM2M2EI	ZOOT - Hook in matt black+black matt lacq D90mm	46,161	15
7001120N29116	ZOOT - Hook in brushed dark brass+oak D120mm	56,449	6
7001120N29116EI	ZOOT - Hook in brushed dark brass+oak D120mm	52,963	15
7001120N29117	ZOOT - Hook in brush dark brass+walnut D120mm	64,502	6
7001120N29117EI	ZOOT - Hook in brush dark brass+walnut D120mm	61,246	15
7001120N291M2	ZOOT - Hook in brush dark brass+black lac D120mm	55,752	6
7001120N291M2EI	ZOOT - Hook in brush dark brass+black lac D120mm	52,246	15
7001120NM216	ZOOT - Hook in matt black+oak D120mm	56,914	6
7001120NM216EI	ZOOT - Hook in matt black+oak D120mm	52,963	15
7001120NM217	ZOOT - Hook in matt black+walnut D120mm	64,967	6
7001120NM217EI	ZOOT - Hook in matt black+walnut D120mm	61,246	15
7001120NM2M2	ZOOT - Hook in matt black+black matt lacq D120mm	56,217	6
7001120NM2M2EI	ZOOT - Hook in matt black+black matt lacq D120mm	52,246	15

7002 TAKK



Article	Description	Price EUR	Units/Box
7002016Z01	TAKK - hook in polished chrome 16x50x57mm	18,909	12
7002016Z01EI	TAKK - hook in polished chrome 16x50x57mm	15,64	25
7002016Z28	TAKK - hook in brushed gold 16x50x57mm	20,197	12
7002016Z28EI	TAKK - hook in brushed gold 16x50x57mm	16,83	25
7002016ZM1	TAKK - hook in matt white 16x50x57mm	16,746	12
7002016ZM1EI	TAKK - hook in matt white 16x50x57mm	13,643	25
7002016ZM2	TAKK - hook in matt black 16x50x57mm	16,53	12
7002016ZM2EI	TAKK - hook in matt black 16x50x57mm	13,443	25

7003 FLOID



Article	Description	Price EUR	Units/Box
7003060Z28	FLOID - hook in brushed gold 60x58mm	25,491	12
7003060Z28EI	FLOID - hook in brushed gold 60x58mm	21,893	25
7003060Z610	FLOID - hook in pewter 60x58mm	21,908	12
7003060Z610EI	FLOID - hook in pewter 60x58mm	18,584	25
7003060Z614	FLOID - hook in antique brass 60x58mm	22,51	12
7003060Z614EI	FLOID - hook in antique brass 60x58mm	19,14	25
7003060ZM1	FLOID - hook in matt white 60x58mm	19,228	12
7003060ZM1EI	FLOID - hook in matt white 60x58mm	16,109	25
7003060ZM2	FLOID - hook in matt black 60x58mm	18,928	12
7003060ZM2EI	FLOID - hook in matt black 60x58mm	15,831	25

7004 CRESTT

Article	Description	Price EUR	Units/Box
7004053ZM1	CRESTT - hook in matt white 53x109x39mm	27,097	6
7004053ZM1EI	CRESTT - hook in matt white 53x109x39mm	23,2	15
7004053ZM2	CRESTT - hook in matt black 53x109x39mm	26,805	6
7004053ZM2EI	CRESTT - hook in matt black 53x109x39mm	22,928	15

7005 CORNER

Article	Description	Price EUR	Units/Box
7005030ZM2425	CORNER - hook in grey + moss grey 101x87x67mm	30,643	6
7005030ZM2425EI	CORNER - hook in grey + moss grey 101x87x67mm	27,266	15
7005030ZM2451	CORNER - hook in grey + yellow 101x87x67mm	30,643	6
7005030ZM2451EI	CORNER - hook in grey + yellow 101x87x67mm	27,266	15
7005030ZM2471	CORNER - hook in grey + pink 101x87x67mm	30,643	6
7005030ZM2471EI	CORNER - hook in grey + pink 101x87x67mm	27,266	15
7005030ZM2481	CORNER - hook in grey + turquoise 101x87x67mm	30,643	6
7005030ZM2481EI	CORNER - hook in grey + turquoise 101x87x67mm	27,266	15
7005030ZM24M1	CORNER - hook in grey + white 101x87x67mm	30,944	6
7005030ZM24M1EI	CORNER - hook in grey + white 101x87x67mm	27,555	15
7005030ZM24M2	CORNER - hook in grey + black 101x87x67mm	30,643	6
7005030ZM24M2EI	CORNER - hook in grey + black 101x87x67mm	27,266	15

7007 ORBIT

Article	Description	Price EUR	Units/Box
7007045ZM226	ORBIT - hook oval in black+copper 45x105x45mm	31,461	6
7007045ZM226EI	ORBIT - hook oval in black+copper 45x105x45mm	28,233	25
7007045ZM228	ORBIT - hook oval in black+gold 45x105x45mm	31,461	6
7007045ZM228EI	ORBIT - hook oval in black+gold 45x105x45mm	28,233	25
7007075ZM226	ORBIT - hook round in black+copper 75x75x45mm	30,38	6
7007075ZM226EI	ORBIT - hook round in black+copper 75x75x45mm	27,194	25
7007075ZM228	ORBIT - hook round in black+gold 75x75x45mm	30,38	6
7007075ZM228EI	ORBIT - hook round in black+gold 75x75x45mm	27,194	25

7008 SWITCH

Article	Description	Price EUR	Units/Box
7008040W16	SWITCH - hook in natural oak wood 40x97x28mm	23,136	12
7008040W16EI	SWITCH - hook in natural oak wood 40x97x28mm	21,626	25
7008040W17	SWITCH - hook in natural walnut wood 40x97x28mm	26,509	12
7008040W17EI	SWITCH - hook in natural walnut wood 40x97x28mm	25,488	25
7008040WM1	SWITCH - hook in white lacq wood 40x97x28mm	25,01	12
7008040WM1EI	SWITCH - hook in white lacq wood 40x97x28mm	23,903	25
7008040WM2	SWITCH - hook in black lacq wood 40x97x28mm	25,01	12
7008040WM2EI	SWITCH - hook in black lacq wood 40x97x28mm	23,903	25

7009 GRAF

Article	Description	Price EUR	Units/Box
7009014L24	GRAF - hook in stainless steel look 14x42x50mm	16,467	12
7009014L24EI	GRAF - hook in stainless steel look 14x42x50mm	14,883	25
7009014L291	GRAF - hook in brushed brass 14x42x50mm	16,692	12
7009014L291EI	GRAF - hook in brushed brass 14x42x50mm	15,118	25
7009014L30	GRAF - hook in brushed black 14x42x50mm	16,467	12
7009014L30EI	GRAF - hook in brushed black 14x42x50mm	14,883	25

7010 FIN

Article	Description	Price EUR	Units/Box
7010050Z01	FIN - hook in polished chrome 50x54x52mm	21,041	12
7010050Z01EI	FIN - hook in polished chrome 50x54x52mm	18,99	25
7010050ZM1	FIN - hook in matt white 50x54x52mm	19,057	12
7010050ZM1EI	FIN - hook in matt white 50x54x52mm	17,011	25
7010050ZM2	FIN - hook in matt black 50x54x52mm	18,766	12
7010050ZM2EI	FIN - hook in matt black 50x54x52mm	16,721	25

7011 TOK

Article	Description	Price EUR	Units/Box
7011025LM1	TOK - hook in matt white 25x65x30mm	12,777	12
7011025LM1EI	TOK - hook in matt white 25x65x30mm	10,839	25
7011025LM2	TOK - hook in matt black 25x65x30mm	12,295	12
7011025LM2EI	TOK - hook in matt black 25x65x30mm	10,358	25
7011040LM1	TOK - hook in matt white 40x100x47mm	18,92	6
7011040LM1EI	TOK - hook in matt white 40x100x47mm	16,694	25
7011040LM2	TOK - hook in matt black 40x100x47mm	18,483	6
7011040LM25	TOK - hook in moss grey 40x100x47mm	18,92	6
7011040LM25EI	TOK - hook in moss grey 40x100x47mm	16,694	25
7011040LM2EI	TOK - hook in matt black 40x100x47mm	16,258	25
7011040LM51	TOK - hook in matt yellow 40x100x47mm	18,92	6
7011040LM51EI	TOK - hook in matt yellow 40x100x47mm	16,694	25
7011040LM71	TOK - hook in matt pink 40x100x47mm	18,92	6
7011040LM71EI	TOK - hook in matt pink 40x100x47mm	16,694	25
7011040LM81	TOK - hook in turquoise blue 40x100x47mm	18,92	6
7011040LM81EI	TOK - hook in turquoise blue 40x100x47mm	16,694	25

7012 TIK

Article	Description	Price EUR	Units/Box
7012025LM1	TIK - hook in matt white 25x80x30mm	12,359	12
7012025LM1EI	TIK - hook in matt white 25x80x30mm	10,421	25
7012025LM2	TIK - hook in matt black 25x80x30mm	11,931	12
7012025LM2EI	TIK - hook in matt black 25x80x30mm	9,994	25
7012040LM1	TIK - hook in matt white 40x125x47mm	17,983	6
7012040LM1EI	TIK - hook in matt white 40x125x47mm	15,759	25
7012040LM2	TIK - hook in matt black 40x125x47mm	17,546	6
7012040LM25	TIK - hook in moss grey 40x125x47mm	17,983	6
7012040LM25EI	TIK - hook in moss grey 40x125x47mm	15,759	25
7012040LM2EI	TIK - hook in matt black 40x125x47mm	15,323	25
7012040LM51	TIK - hook in matt yellow 40x125x47mm	17,983	6
7012040LM51EI	TIK - hook in matt yellow 40x125x47mm	15,759	25
7012040LM71	TIK - hook in matt pink 40x125x47mm	17,983	6
7012040LM71EI	TIK - hook in matt pink 40x125x47mm	15,759	25
7012040LM81	TIK - hook in turquoise blue 40x125x47mm	17,983	6
7012040LM81EI	TIK - hook in turquoise blue 40x125x47mm	15,759	25

7014 DIABOLO

Article	Description	Price EUR	Units/Box
7014021L24	DIABOLO - hook in brushed steel 21x50mm	12,799	12
7014021L24EI	DIABOLO - hook in brushed steel 21x50mm	10,181	25
7014021L291	DIABOLO - hook in brushed brass 21x50mm	12,92	12
7014021L291EI	DIABOLO - hook in brushed brass 21x50mm	10,296	25
7014021L30	DIABOLO - hook in brushed black 21x50mm	12,799	12
7014021L30EI	DIABOLO - hook in brushed black 21x50mm	10,181	25
7014021L31	DIABOLO - hook in brushed grey 21x50mm	12,92	12
7014021L31EI	DIABOLO - hook in brushed grey 21x50mm	10,296	25

7015 BOL

Article	Description	Price EUR	Units/Box
7015045NM222	BOL - hook in matt black+sapelly D45mm	17,703	12
7015045NM222EI	BOL - hook in matt black+sapelly D45mm	13,651	25
7015045NM223	BOL - hook in matt black+beech D45mm	17,549	12
7015045NM223EI	BOL - hook in matt black+beech D45mm	13,375	25
7015045NM2M1	BOL - hook in matt black+white matt lacq D45mm	17,814	12
7015045NM2M1EI	BOL - hook in matt black+white matt lacq D45mm	13,651	25

7016 ROUND

Article	Description	Price EUR	Units/Box
7016028L291	ROUND - hook in brushed brass D28x45mm	15,049	12
7016028L291EI	ROUND - hook in brushed brass D28x45mm	13,047	25
7016028L30	ROUND - hook in brushed black D28x45mm	15,049	12
7016028L30EI	ROUND - hook in brushed black D28x45mm	13,047	25

7017 COMO

Article	Description	Price EUR	Units/Box
7017041Z01	COMO - hook in polished chrome D41mm	12,495	12
7017041Z01EI	COMO - hook in polished chrome D41mm	8,794	25
7017041Z03	COMO - hook in polished black nickel D41mm	12,832	12
7017041Z03EI	COMO - hook in polished black nickel D41mm	10	25
7017041Z06	COMO - hook in polished copper D41mm	12,832	12
7017041Z06EI	COMO - hook in polished copper D41mm	10,064	25
7017041Z07	COMO - hook in polished brass D41mm	12,832	12
7017041Z07EI	COMO - hook in polished brass D41mm	9,987	25
7017041Z11	COMO - hook in matt chrome D41mm	11,494	12
7017041Z11EI	COMO - hook in matt chrome D41mm	9,395	25
7017041Z23	COMO - hook in brushed nickel D41mm	11,885	12
7017041Z23EI	COMO - hook in brushed nickel D41mm	9,42	25
7017041Z26	COMO - hook in brushed copper D41mm	12,677	12
7017041Z26EI	COMO - hook in brushed copper D41mm	9,54	25
7017041Z28	COMO - hook in brushed gold D41mm	13,991	12
7017041Z28EI	COMO - hook in brushed gold D41mm	9,604	25
7017041ZM1	COMO - hook in matt white D41mm	11,938	12
7017041ZM1EI	COMO - hook in matt white D41mm	8,755	25
7017041ZM2	COMO - hook in matt black D41mm	10,455	12
7017041ZM2EI	COMO - hook in matt black D41mm	8,462	25

7018 LUV WOOD

Article	Description	Price EUR	Units/Box
7018028W16	LUV - hook natural oak wood 28x82mm	34,718	6
7018028W16EI	LUV - hook natural oak wood 28x82mm	32,189	25
7018028W17	LUV - hook natural walnut wood 28x82mm	45,624	6
7018028W17EI	LUV - hook natural walnut wood 28x82mm	42,365	25
7018028WM2	LUV - hook natural black wood 28x82mm	36,899	6
7018028WM2EI	LUV - hook natural black wood 28x82mm	34,045	25

7022 ZETT

Article	Description	Price EUR	Units/Box
7022050Z01	ZETT - hook in polished chrome 50x50mm	30,163	6
7022050Z01EI	ZETT - hook in polished chrome 50x50mm	27,099	25
7022050Z03	ZETT - hook in polished black niquel 50x50mm	34,27	6
7022050Z03EI	ZETT - hook in polished black niquel 50x50mm	28,707	25
7022050Z06	ZETT - hook in polished copper 50x50mm	34,27	6
7022050Z06EI	ZETT - hook in polished copper 50x50mm	28,707	25
7022050Z07	ZETT - hook in polished brass 50x50mm	34,27	6
7022050Z07EI	ZETT - hook in polished brass 50x50mm	28,707	25
7022050ZM1	ZETT - hook in matt white 50x50mm	30,752	6
7022050ZM1EI	ZETT - hook in matt white 50x50mm	25,973	25
7022050ZM2	ZETT - hook in matt black 50x50mm	29,66	6
7022050ZM2EI	ZETT - hook in matt black 50x50mm	25,571	25

7024 BIRDD

Article	Description	Price EUR	Units/Box
7024080ZM2M2	BIRDD - hook in matt black 25x80mm	20,111	6
7024080ZM2M2EI	BIRDD - hook in matt black 25x80mm	18,007	25
7024080ZM2M31	BIRDD - hook in forest green 25x80mm	20,111	6
7024080ZM2M31EI	BIRDD - hook in forest green 25x80mm	18,007	25
7024080ZM2M72	BIRDD - hook in volcano red 25x80mm	20,111	6
7024080ZM2M72EI	BIRDD - hook in volcano red 25x80mm	18,007	25

7025 MEGG

Article	Description	Price EUR	Units/Box
7025045N16M27	MEGG - hook natural oak wood+lava grey 40x45mm	41,66	6
7025045N16M27EI	MEGG - hook natural oak wood+lava grey 40x45mm	37,454	25
7025045N17M27	MEGG - hook natural nogal wood+lava grey 40x45mm	47,053	6
7025045N17M27EI	MEGG - hook natural nogal wood+lava grey 40x45mm	42,929	25
7025045NM2M2	MEGG - hook natural black wood+black 40x45mm	42,883	6
7025045NM2M2EI	MEGG - hook natural black wood+black 40x45mm	38,695	25

7027 EQUIS



Article	Description	Price EUR	Units/Box
7027080Z01	EQUIS - hook in polished chrome 80x80mm	33,269	6
7027080Z01EI	EQUIS - hook in polished chrome 80x80mm	28,247	25
7027080Z03	EQUIS - hook in polished black niquel 80x80mm	34,176	6
7027080Z03EI	EQUIS - hook in polished black niquel 80x80mm	28,971	25
7027080Z06	EQUIS - hook in polished copper 80x80mm	35,052	6
7027080Z06EI	EQUIS - hook in polished copper 80x80mm	29,132	25
7027080Z07	EQUIS - hook in polished brass 80x80mm	35,052	6
7027080Z07EI	EQUIS - hook in polished brass 80x80mm	29,132	25
7027080ZM1	EQUIS - hook in matt white 80x80mm	32,778	6
7027080ZM1EI	EQUIS - hook in matt white 80x80mm	27,765	25
7027080ZM2	EQUIS - hook in matt black 80x80mm	32,185	6
7027080ZM2EI	EQUIS - hook in matt black 80x80mm	27,202	25

7035 ARPA



Article	Description	Price EUR	Units/Box
7035014L24	ARPA - hook in stainless steel look 14x55mm	17,2	12
7035014L24EI	ARPA - hook in stainless steel look 14x55mm	15,471	25
7035014L291	ARPA - hook in brushed brass 14x55mm	17,2	12
7035014L291EI	ARPA - hook in brushed brass 14x55mm	15,471	25
7035014L30	ARPA - hook in brushed balck 14x55mm	17,2	12
7035014L30EI	ARPA - hook in brushed balck 14x55mm	15,471	25
7035014L623	ARPA - hook in rustic brass 14x55mm	20,642	12
7035014L623EI	ARPA - hook in rustic brass 14x55mm	19,015	25

7036 ARPA PLATE



Article	Description	Price EUR	Units/Box
7036025L24	ARPA PLATE - hook stainless steel look 25x80mm	20,043	12
7036025L24EI	ARPA PLATE - hook stainless steel look 25x80mm	18,415	25
7036025L291	ARPA PLATE - hook brushed brass 25x80mm	20,043	12
7036025L291EI	ARPA PLATE - hook brushed brass 25x80mm	18,415	25
7036025L30	ARPA PLATE - hook brushed black 25x80mm	20,043	12
7036025L30EI	ARPA PLATE - hook brushed black 25x80mm	18,415	25
7036025L623	ARPA PLATE - hook rustic brass 25x80mm	22,885	12
7036025L623EI	ARPA PLATE - hook rustic brass 25x80mm	21,36	25

7037 LUV



Article	Description	Price EUR	Units/Box
7037017Z23	LUV - hook in brushed nickel 17x50m	14,927	12
7037017Z23EI	LUV - hook in brushed nickel 17x50m	12,877	25
7037017Z618	LUV - hook in brushed brass cava 17x50m	15,973	12
7037017Z618EI	LUV - hook in brushed brass cava 17x50m	13,881	25
7037017ZM1	LUV - hook in matt white 17x50m	13,406	12
7037017ZM1EI	LUV - hook in matt white 17x50m	11,416	25
7037017ZM2	LUV - hook in matt black 17x50m	12,931	12
7037017ZM2EI	LUV - hook in matt black 17x50m	10,959	25

7039 BELT

Article	Description	Price EUR	Units/Box
7039022ZM1	BELT - hook in matt white 22x114mm	20,442	6
7039022ZM1EI	BELT - hook in matt white 22x114mm	17,415	25
7039022ZM2	BELT - hook in matt black 22x114mm	20,242	6
7039022ZM25	BELT - hook in moss grey 22x114mm	20,671	6
7039022ZM25EI	BELT - hook in moss grey 22x114mm	17,211	25
7039022ZM2EI	BELT - hook in matt black 22x114mm	16,809	25
7039022ZM31	BELT - hook in forest green 22x114mm	20,72	6
7039022ZM31EI	BELT - hook in forest green 22x114mm	17,255	25
7039022ZM43	BELT - hook in mocca brown 22x114mm	20,72	6
7039022ZM43EI	BELT - hook in mocca brown 22x114mm	17,255	25
7039022ZM72	BELT - hook in volcano red 22x114mm	20,72	6
7039022ZM72EI	BELT - hook in volcano red 22x114mm	17,255	25

Door stoppers



8002 PUK

Article	Description	Price EUR	Units/Box
8002065W16	PUK - doorstopper in oak wood 65x24mm	31,91	12
8002065W17	PUK - doorstopper in walnut wood 65x24mm	35,55	12
8002065WM2	PUK - doorstopper in ash matt black lac. 65x24mm	33,6	12

8003 BUGGY

Article	Description	Price EUR	Units/Box
8003047L618	BUGGY - doorstopper in brushed brass cava 47x47mm	15,88	12
8003047LM27	BUGGY - doorstopper in grey lava 47x47mm	15	12

8007 LOW

Article	Description	Price EUR	Units/Box
8007048L618	LOW - doorstopper in brushed brass cava 48x17mm	13,92	12
8007048LM27	LOW - doorstopper in lava grey 48x17mm	13,2	12
8007068L618	LOW - doorstopper in brushed brass cava 68x17mm	18,95	12
8007068LM27	LOW - doorstopper in lava grey 68x17mm	18,05	12

8009 GRAF

Article	Description	Price EUR	Units/Box
8009027L24	GRAF - doorstopper in stainless steel look 27x28mm	7,5	12
8009027L291	GRAF - doorstopper in brushed brass 27x28mm	7,5	12
8009027L30	GRAF - doorstopper in brushed black 27x28mm	7,5	12

8011 ARPA

Article	Description	Price EUR	Units/Box
8011045L24	ARPA - doorstopper in stainless steel look 45x30mm	18,85	12
8011045L291	ARPA - doorstopper in brushed brass 45x30mm	18,85	12
8011045L30	ARPA - doorstopper in brushed black 45x30mm	18,85	12
8011045L623	ARPA - doorstopper in rustic brass 45x30mm	19,9	12

8013 ARPA WALL

Article	Description	Price EUR	Units/Box
8013103L24	ARPA - doorstopper wall in stainless steel look 103x50mm	31,95	12
8013103L291	ARPA - doorstopper wall in brushed brass 103x50mm	31,95	12
8013103L30	ARPA - doorstopper wall in brushed black 103x50mm	31,95	12
8013103L623	ARPA - doorstopper wall in rustic brass 103x50mm	34,9	12

Feet



6005 FONDA

Article	Description	Price EUR	Units/Box
6005100L01	FONDA - 100mm feet w/regulator pol chrome	27,47	24
6005100L24	FONDA - 100mm feet w/regulator SST look	25,875	24
6005100L29	FONDA - 100mm feet w/regulator brushed dark brass	25,875	24
6005100L30	FONDA - 100mm feet w/regulator brushed black	25,875	24
6005150L01	FONDA - 150mm feet w/regulator pol chrome	33,977	24
6005150L24	FONDA - 150mm feet w/regulator SST look	33,54	24
6005150L29	FONDA - 150mm feet w/regulator brushed dark brass	33,54	24
6005150L30	FONDA - 150mm feet w/regulator brushed black	33,54	24
6005200L01	FONDA - 200mm feet w/regulator pol chrome	41,462	24
6005200L24	FONDA - 200mm feet w/regulator SST look	40,819	24
6005200L29	FONDA - 200mm feet w/regulator brushed dark brass	41,462	24
6005200L30	FONDA - 200mm feet w/regulator brushed black	41,462	24

ZAMAK

Glossy



Z01
Polished chrome



Z03
Polished titanium black



Z05
Polished nickel



Z06
Polished copper



Z07
Polished brass

Grey Gris



Z11
Matt chrome



Z31
Brushed grey



Z32
Brushed mole grey



Z617
Graphite grey



ZP1
Chrome look

Brass



Z27
Brushed brass



Z28
Brushed gold



Z618
Brushed brass cava

Black Negro

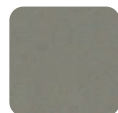


ZM2
Matt black



Z33
Titanium black

Color



ZM25
Moss grey



ZM31
Forest green



ZM41
Metallic brown



ZM43
Mocca brown



ZM72
Volcano red

White



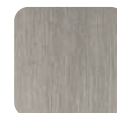
ZM1
Matt white

Copper



Z26
Brushed copper

Inox look Look inox

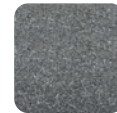


Z23
Brushed nickel

Vintage



Z66
Antique copper



Z610
Pewter



Z612
Antique silver



Z614
Antique brass



Z623
Rustic brass



ZM22
Textured black

IMPORTANT NOTE: The finishes that you see represented in this section are a digital simulation of the real finishes and in no way can they be used as a reference for physical comparisons. The aim of this index is to guide and inform the user about the finishes we work with.

The finishes of all our models are defined exactly as is indicated in the catalogue and therefore are in no way characteristics that can be personalized.

ALUMINIUM

Glossy



L01
Polished chrome



L02
Anodized bright

Grey Gris



L04
Anodized matt



L31
Brushed grey



LM23
Metallic grey

White



LM1
Matt white

Brass



L29
Brushed dark brass

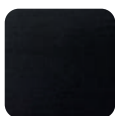


L291
Brushed brass



L618
Brushed brass cava

Black



L09 / LM2
Matt black



L30
Brushed black

Color



LM41
Metallic brown



LM25
Moss grey



LM31
Forest green



LM43
Mocca brown

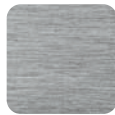


LM72
Volcano red



LM82
Midnight blue

Stainless steel look



L24
Stainless steel look

Vintage



L613
Antique bronze



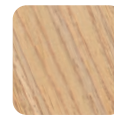
L623
Rustic brass

STAINLESS STEEL



S25
Brushed stainless steel

WOOD



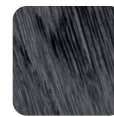
W00
Raw brushed



W02
White brushed



W08
Brown brushed



W09
Black brushed



W16
Oak



W17
Walnut



W18
Ash



WM2
Wood matt black
lacquered

LEATHER



P26
Beige



P36
Brown



P99
Black

Viefe®

2024

info@viefe.com
T +34 938584029
📷 f 📺 in ▶

🌐 *viefe.com*

C/ Dels Traginers 2
Sant Pere de Torelló
08572 Barcelona, Spain